

COMITROL® PROCESSOR MODEL 5600

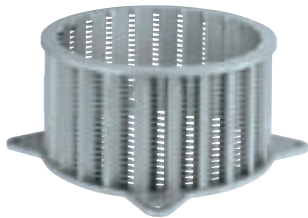
MAXIMUM POWER PLUS POSITIVE FEED ASSISTANCE

The Comitrol® Processor Model 5600 maximizes capacity. A powerful 100 HP (75 kW) motor and a 5 HP (3.7 kW) screw feeder equipped with a gearmotor and a VFD (variable frequency drive) completely optimize throughput. The 5600 benefits from the unique Comitrol size reduction principle at an increased impeller speed of 5,600 revolutions per minute. Stainless steel construction ensures maximum durability and sanitation. The machine features continuous operation for uninterrupted production, and is designed for easy cleanup and maintenance.

Common applications include: vegetable processing, curry, ginger, coconut meat, beef/poultry/seafood and byproducts, and textured vegetable protein. Product input is dependent on the style of reduction head, impeller selection, and spacing within the head. Generally, maximum input size in any dimension should not exceed 2-1/2" (63.5 mm).



TYPES OF CUTS



Cutting Head

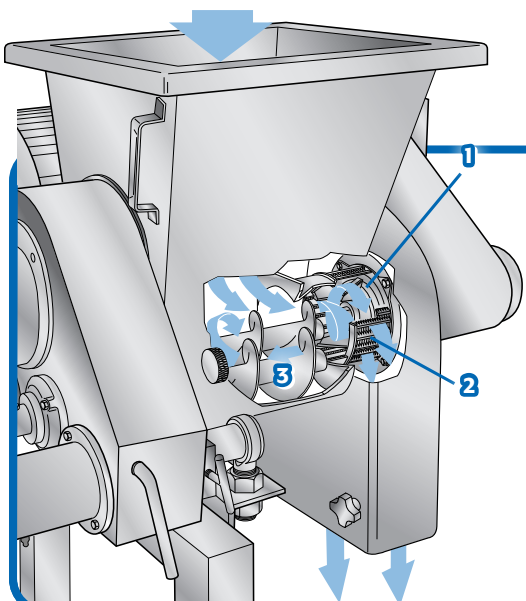
Utilizes 6" (152.4 mm) diameter Cutting Heads paired with a variety of impellers to produce coarse to fine reductions.



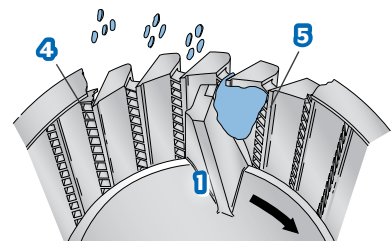
- 1** CHEESE CURD
- 2** DRIED PARSLEY
- 3** BREADED CHICKEN PATTY
- 4** FISH HEAD AND FRAME

- 5** MANGO
- 6** RESTRUCTURED STEAK
- 7** SHRIMP SHELL
- 8** TURKEY ROLL
- 9** TURKEY SAUSAGE

CUTTING OVERVIEW



- 1** Impeller
- 2** Cutting Head
- 3** Screw Feeder
- 4** Horizontal Separators
- 5** Vertical Knives



If your product application is not mentioned on this page, contact your local Urschel representative to determine the most effective solution to your size reduction needs.

COMITROL® PROCESSOR MODEL 5600

Measurements and weights may vary depending on machine configuration.

Length:.....93.19" (2367 mm)

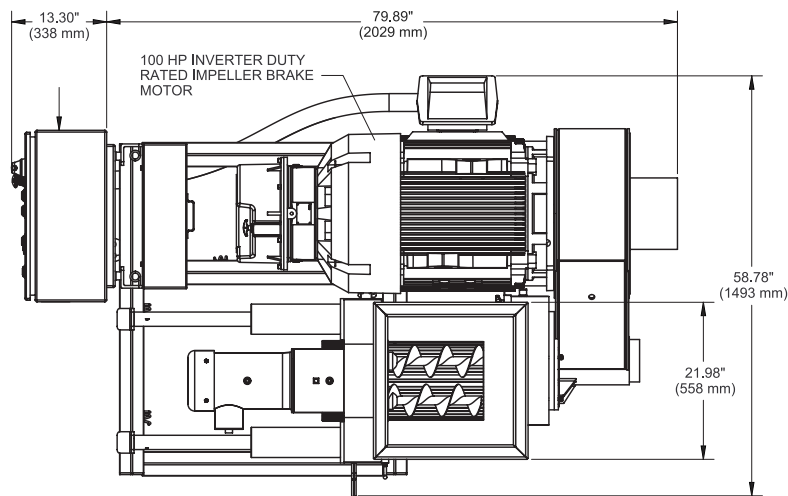
Width:.....58.78" (1493 mm)

Height:.....67.75" (1721 mm)

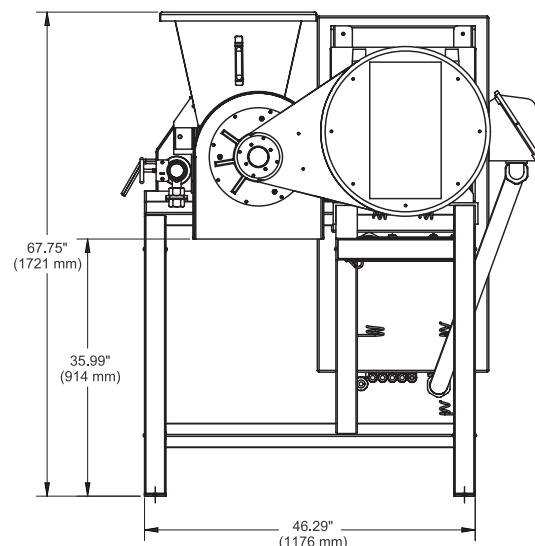
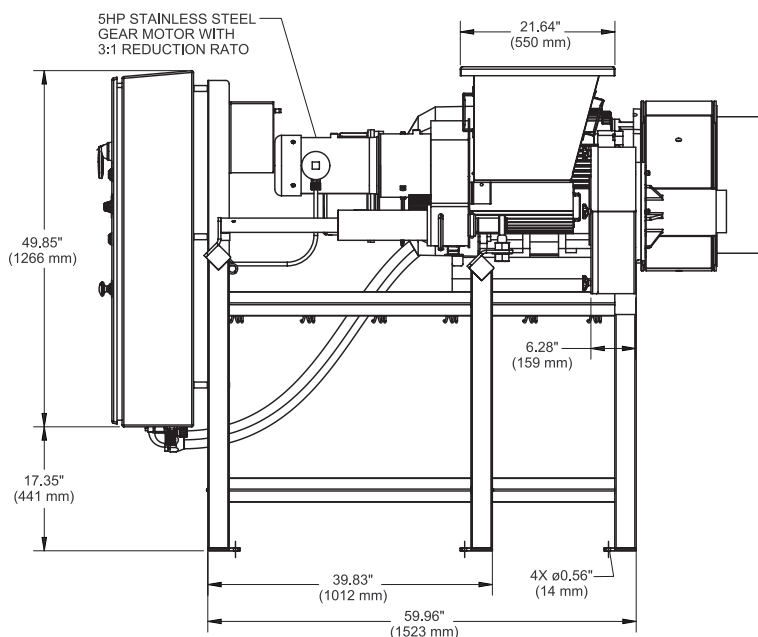
Net Weight:3300 lb (1497 kg)

Motors:.....100 HP (75 kW)

Screw Feeder
equipped with a
garmotor and VFD
(variable frequency
drive) - 5 HP (3.7 kW)



NOTE: Products that are explosive or create a potentially explosive atmosphere should not be processed by any standard Urschel machine. A potentially explosive atmosphere could be created if processing your product creates fumes or dust in sufficient concentrations. In such cases, customers may work with Urschel to develop a customized solution through a certified print (CP) process.



SPECIFICATIONS & DIMENSIONS

PUT URSCHEL TO THE TEST Schedule a comprehensive, no-obligation test cut of your product.

COMITROL®
BY URSCHEL THE SIZE REDUCTION SPECIALISTS



URSCHEL®
The Global Leader in Food Cutting Technology
www.urschel.com | ✉ info@urschel.com