

# SPRINT 2<sup>®</sup> DICER

## PRECISION CUTS WITH COST EFFECTIVE OPTIONS

The Sprint 2<sup>®</sup> Dicer accepts a maximum infeed product of 6.5" (165 mm) in any dimension. May come equipped with VFD or with soft start in a 3 HP (1.5 kW) motor, or the cost-effective option of a 1.5 HP (1.1 kW) soft start. Features continuous operation for uninterrupted production.

Cutting zones are completely separate from mechanical zones. Rounded tube frame contributes to sanitary design and ease cleaning. Provides slicing-only capability by removing the circular and crosscut knife spindles. Provides 2- or 3-dimensional cutting by adjusting the slice thickness, crosscut, and circular knife spindles for a full range of dices, crumbles/granulations, or strips. A variety of shreds are also available. The crosscut knife spindle in conjunction with the other cutting components create a compact cutting zone establishing precision cuts as product moves throughout the process.



### TYPES OF CUTS

#### FLAT OR CRINKLE SLICES

1/16 – 1" (1.6 – 25.4 mm)

#### DICES/CRUMBLES/STRIPS

2- and 3-dimensional cutting involves adjusting the slice thickness, and adjustment or removal of the circular or crosscut spindles.

##### Circular Knife Cuts:

1/8 – 3" (3.2 – 76.2 mm)

##### Crosscut Knife Cuts:

3/32 – 1" (2.4 – 25.4 mm)

##### Crosscut Knife Crinkle Cuts:

(.076" (1.9 mm) depth):

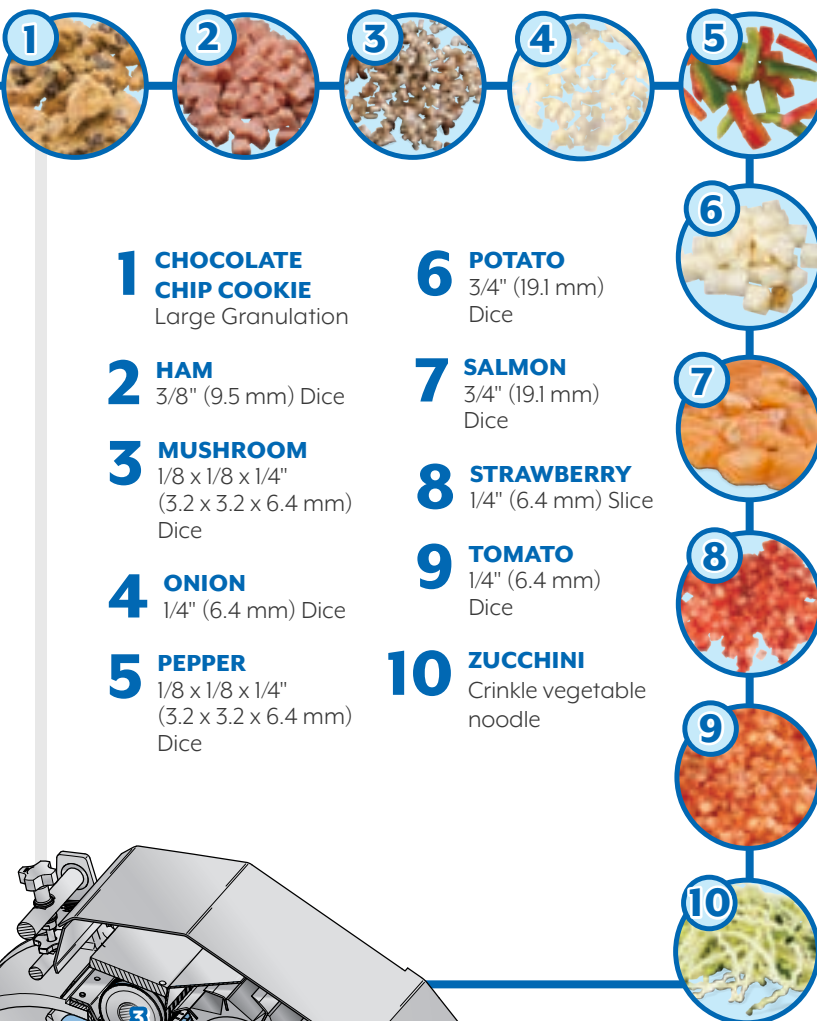
9/32 – 9/16" (7.1 – 14.3 mm)

##### Crosscut Knife Deep Crinkle Cuts: (.125" – .145"

(3.2 – 3.7 mm) depth): 3/8 – 1/2" (9.5 – 12.7 mm)

#### SHREDS

Fine, medium, and coarse shreds can be produced on hot or chilled cooked meat products by using shredding disc spindle in place of the crosscut knife spindle.



**1 CHOCOLATE CHIP COOKIE**  
Large Granulation

**2 HAM**  
3/8" (9.5 mm) Dice

**3 MUSHROOM**  
1/8 x 1/8 x 1/4"  
(3.2 x 3.2 x 6.4 mm)  
Dice

**4 ONION**  
1/4" (6.4 mm) Dice

**5 PEPPER**  
1/8 x 1/8 x 1/4"  
(3.2 x 3.2 x 6.4 mm)  
Dice

**6 POTATO**  
3/4" (19.1 mm)  
Dice

**7 SALMON**  
3/4" (19.1 mm)  
Dice

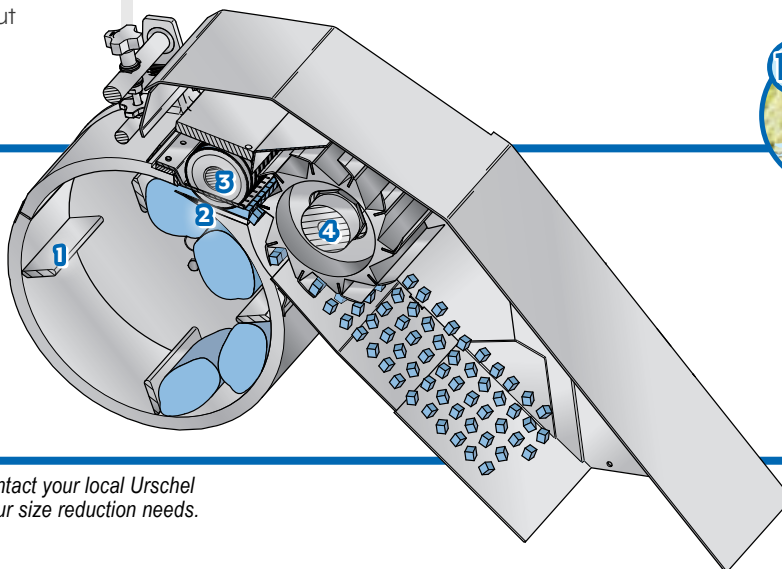
**8 STRAWBERRY**  
1/4" (6.4 mm) Slice

**9 TOMATO**  
1/4" (6.4 mm)  
Dice

**10 ZUCCHINI**  
Crinkle vegetable  
noodle

### CUTTING OVERVIEW

1. Impeller Paddles
2. Slicing Knife
3. Circular Knives
4. Crosscut Knives



*If your product application is not mentioned on this page, contact your local Urschel representative to determine the most effective solution to your size reduction needs.*

# SPRINT 2<sup>®</sup> DICER

## SPECIFICATIONS & DIMENSIONS

Measurements and weights may vary depending on machine configuration.

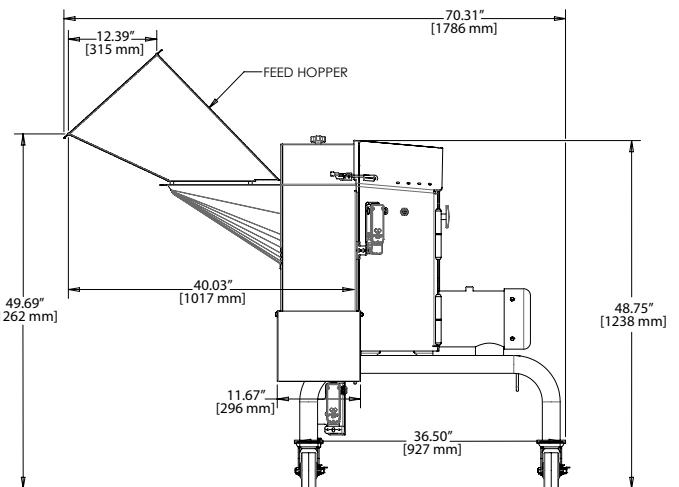
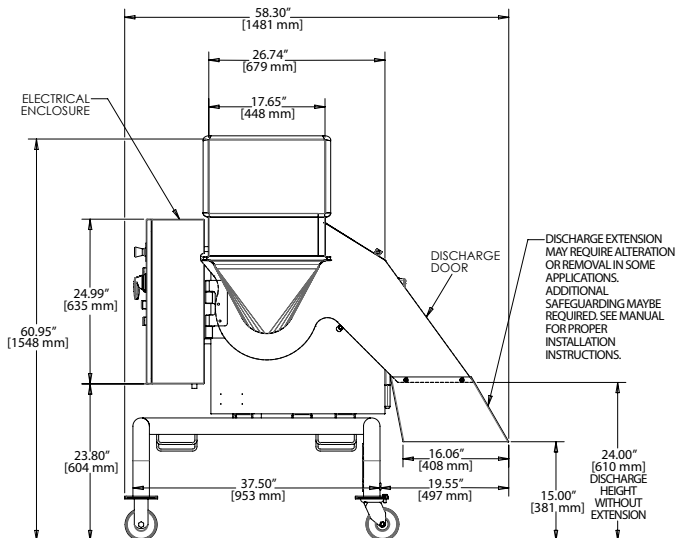
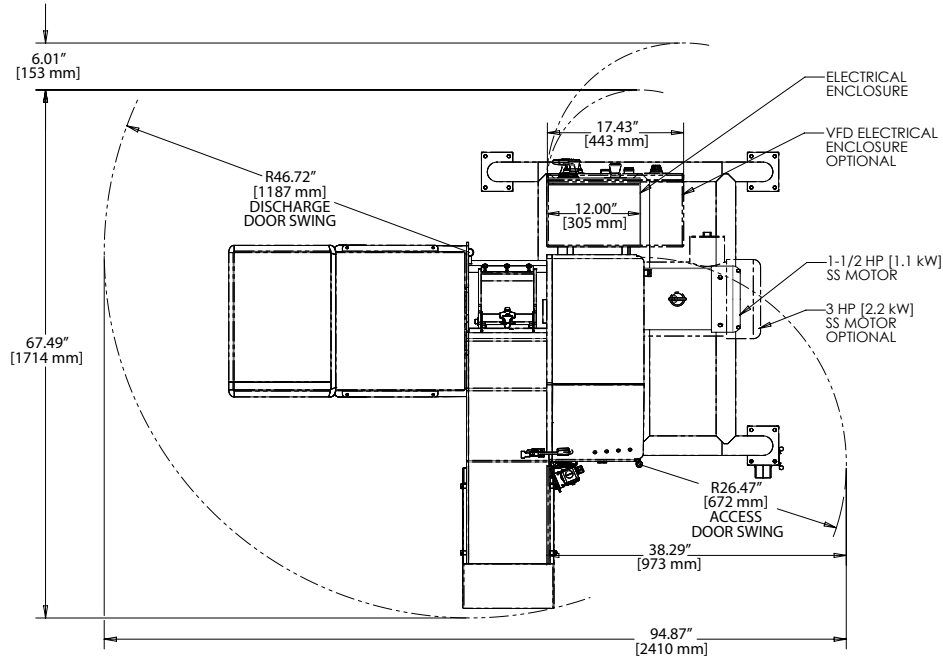
**Length:**..... 70.31" (1786 mm)

**Width:**..... 58.30" (1481 mm)

**Height:**..... 60.95" (1548 mm)

**Net Weight:** ..... 1000 lb (454 kg)

**Motors:**..... 3 HP (2.2 kW) with VFD  
3 HP (2.2 kW) with soft start, or 1.5 HP (1.1 kW) with soft start



## TEST CUT YOUR PRODUCT

Contact your local Urschel representative to schedule a comprehensive, no-obligation test-cut of your product: [www.urschel.com](http://www.urschel.com).



**URSCHEL<sup>®</sup>**

The Global Leader in Food Cutting Technology

[www.urschel.com](http://www.urschel.com) | ✉ [info@urschel.com](mailto:info@urschel.com)