

MODEL VSC

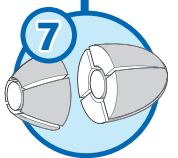
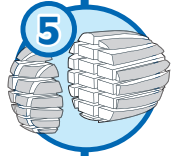
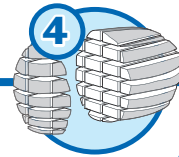
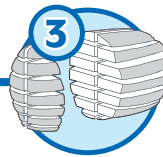
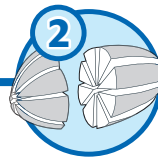
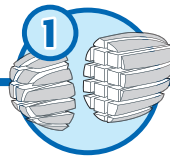
CUTS SEGMENTS, SLABS, & STRIPS

The Model VSC produces a wide range of segments, slabs, or rectangular strips. Several different cutting set-ups are available including standard heads, Flo-Cut® Model 360 heads, and Velocicut® heads. Consult your local Urschel sales representative for the cutting head best-suited for your application.

The Model VSC produces ranges of segments, slabs, and square or rectangular strips from many food products such as carrots, pickles, zucchini, potatoes. The Model VSC features an available variable speed drive, hinged access panel, quick changeover of a wide variety of cutting heads, and simplified design for easy cleanup and maintenance. Maximum input product size is 4" (101.6 mm) in diameter, and the machine easily adapts to automated belt feeding.



TYPES OF CUTS



1 SQUARE
.156" (4.0 mm) –
1" (25.4 mm)

2 SEGMENT
3, 4, 5, 6, 8, 10, or 12

3 BI-SLAB
.125" (3.2 mm) –
.313" (8.0 mm)

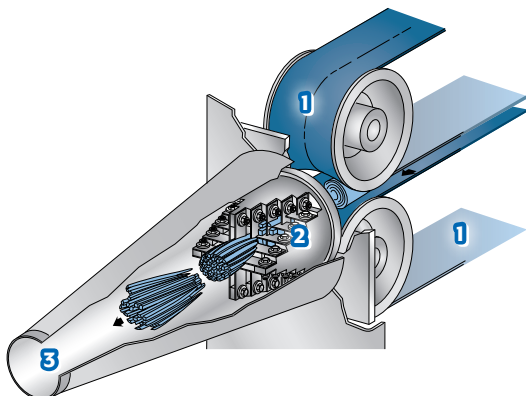
4 CROSS SLAB
including .125 x 1.125"
(3.2 x 28.6 mm), .188 x 1"
(4.8 x 25.4 mm), .281 x 1.6"
(7.1 x 39.9 mm), .344 x 1.25"
(8.7 x 31.8 mm)

5 RECTANGULAR
.250 x .438" (6.35 x 11.1 mm)
–.438 x .875" (11.1 x 19.1 mm)

6 SLAB
Straight .125" (3.2 mm) –
.625" (15.9 mm), Crinkle: .188"
(4.8 mm) – .250" (6.4 mm)

7 CORING WITH SEGMENT
.375 – 2" (9.5 – 50.8 mm)
with 2 or 4 segments

CUTTING OVERVIEW



1. Conveyor Belt
2. Knives
3. Discharge Cone

MODEL VSC

Measurements and weights may vary depending on machine configuration.

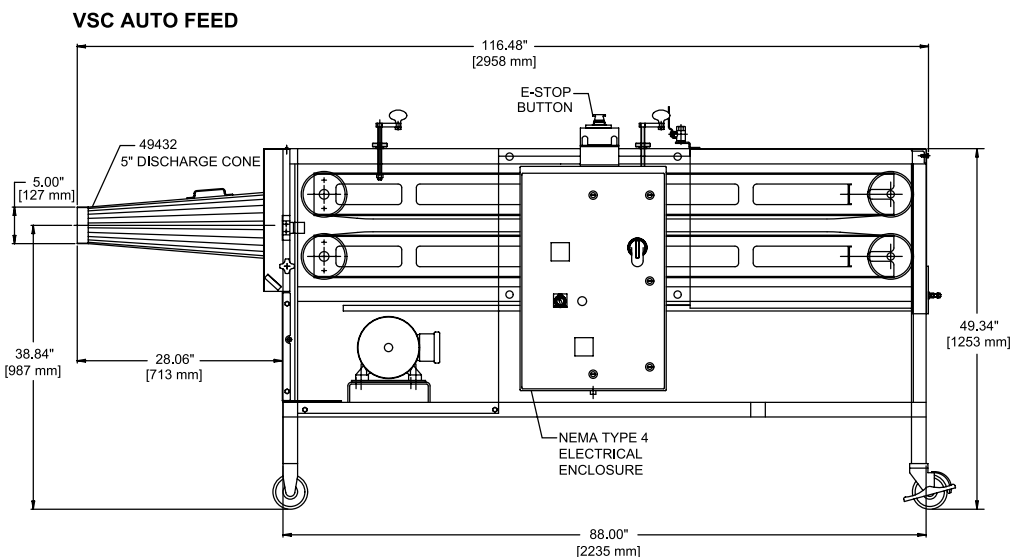
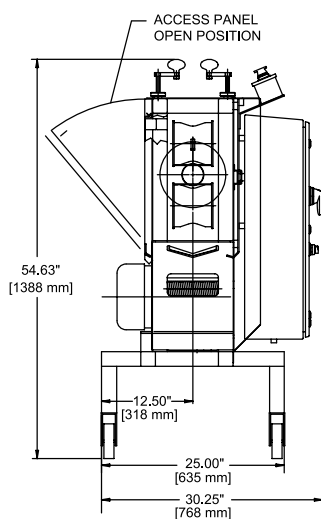
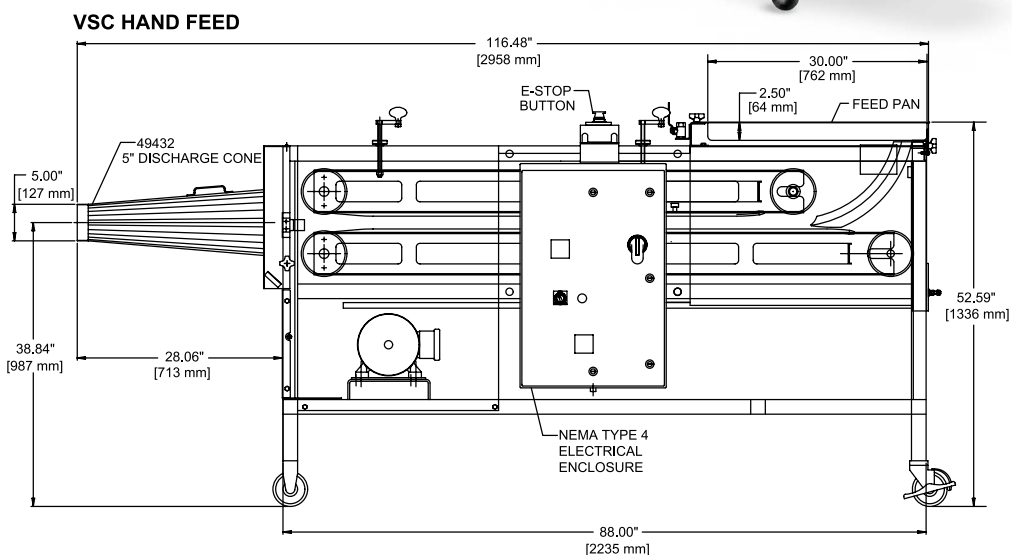
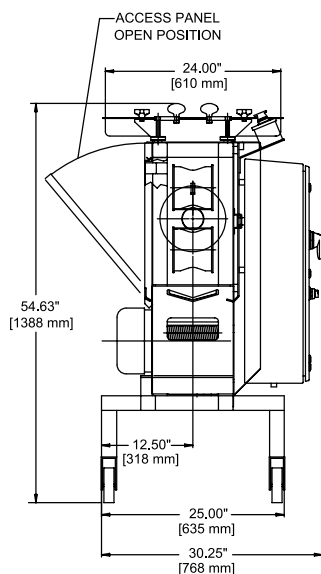
Length:..... 116.42" (2957 mm) **Net Weight:** 1028 lb (466 kg)

Width:..... 32.41" (823 mm) **Motor:**..... 5 HP (3.7 kW)

Height:..... 54.81" (1392 mm)



SPECIFICATIONS & DIMENSIONS



TEST CUT YOUR PRODUCT

Contact your local Urschel representative to schedule a comprehensive, no-obligation test-cut of your product: www.urschel.com.



URSCHEL®

The Global Leader in Food Cutting Technology

www.urschel.com | ✉ info@urschel.com