

# COMITROL® PROCESSOR MODEL 3640F

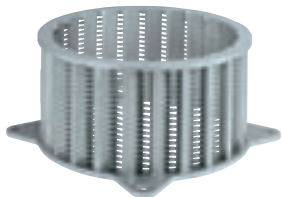
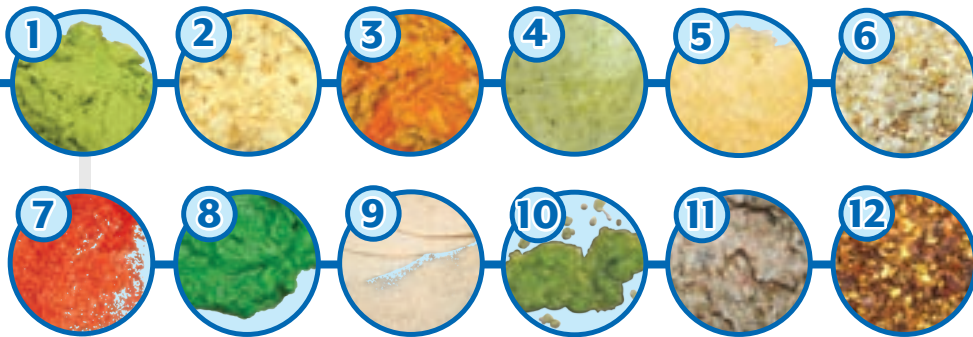
## SMALL VOLUME TO HIGH CAPACITY ENVIRONMENTS

The Model 3640F is popular in both small volume and large-scale production environments. The 3640F is equipped with a 40 HP (29.8 kW) motor and a screw feeder controlled by a VFD (variable frequency drive) for positive feeding assistance.

Common applications include rework of bakery items, beef/poultry/seafood and byproducts, and vegetable/fruit reductions. Stainless steel construction ensures maximum durability and sanitation. The machine features continuous operation for uninterrupted production, and is designed for easy cleanup and maintenance. Product input is dependent on the style of reduction head, impeller selection, and spacing within the head. Generally, maximum input size in any dimension should not exceed 2-1/2" (63.5 mm).



### TYPES OF CUTS

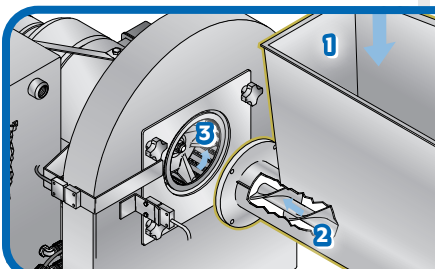


#### Cutting Head

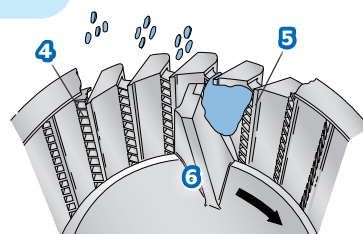
Utilizes 6" (152.4 mm) diameter Cutting Heads paired with a variety of impellers to produce coarse to fine reductions.

- |                                    |                                 |
|------------------------------------|---------------------------------|
| <b>1</b> AVOCADO PASTE             | <b>7</b> POLYMER                |
| <b>2</b> BREAD GRANULATION         | <b>8</b> KALE                   |
| <b>3</b> COARSE HUMMUS             | <b>9</b> FLOUR TORTILLA SHELL   |
| <b>4</b> COARSE PINEAPPLE PUREE    | <b>10</b> TOMATILLO/ONION PUREE |
| <b>5</b> GARLIC                    | <b>11</b> FISH WASTE            |
| <b>6</b> GRANOLA/FRUIT/NUT MIXTURE | <b>12</b> DRIED CHILI PEPPERS   |

### CUTTING OVERVIEW



1. Feed Hopper
2. Screw Feeder
3. Cutting Head
4. Horizontal Separators
5. Vertical Knives
6. Impeller



If your product application is not mentioned on this page, contact your local Urschel representative to determine the most effective solution to your size reduction needs.

# COMITROL® PROCESSOR MODEL 3640F

Measurements and weights may vary depending on machine configuration.

Length:.....82.25" (2089 mm)

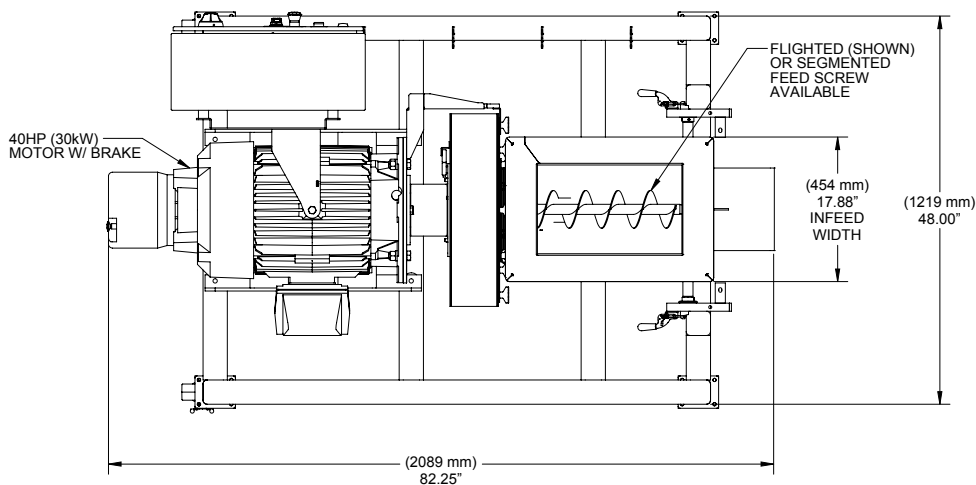
Width:.....48.00" (1219 mm)

Height:.....69.27" (1759 mm)

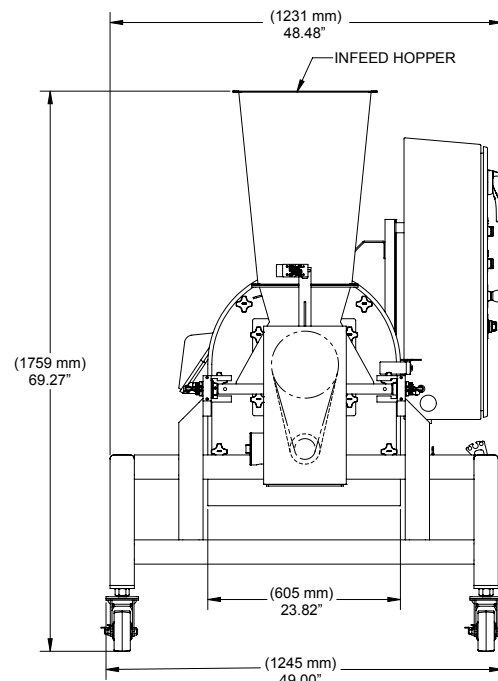
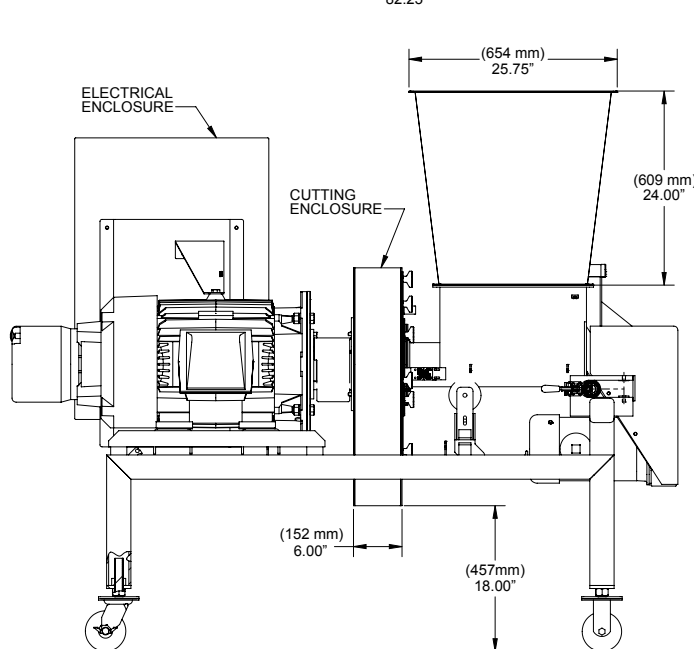
Net Weight: .....1850 lb (840 kg)

Motors:.....Impeller –  
40 HP (29.8 kW)

.....Screw Feeder –  
2 HP (1.5 kW)



NOTE: Products that are explosive or create a potentially explosive atmosphere should not be processed by any standard Urschel machine. A potentially explosive atmosphere could be created if processing your product creates fumes or dust in sufficient concentrations. In such cases, customers may work with Urschel to develop a customized solution through a certified print (CP) process.



SPECIFICATIONS & DIMENSIONS

PUT URSCHEL TO THE TEST Schedule a comprehensive, no-obligation test cut of your product.

**COMITROL®**  
BY **URSCHEL** THE SIZE REDUCTION SPECIALISTS



**URSCHEL®**  
The Global Leader in Food Cutting Technology  
www.urschel.com | ✉ info@urschel.com