

# COMITROL® PROCESSOR SLANT MODELS 3640, 3660, & 3675

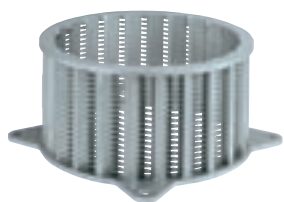
## SMALL VOLUME TO HIGH CAPACITY ENVIRONMENTS

The Comitrol® Processor Slant Models 3640, 3660, and 3675 are ideal for small or high output food processing plants. Each slant model offers a different size motor tailored to production requirements. Processors benefit from a wide selection of interchangeable cutting heads and impellers for diverse applications such as chopping, flake cutting, granulating, pureeing, and emulsifying.

These models are frequently utilized as precutters for further reduction by a Comitrol Model 1500 or 1700. Stainless steel construction ensures maximum durability and sanitation. Machines feature continuous operation for uninterrupted production, and are designed for easy cleanup and maintenance. Product input is dependent on the style of reduction head, impeller selection, and spacing within the head. Generally, maximum input size in any dimension should not exceed 2-1/2" (63.5 mm).

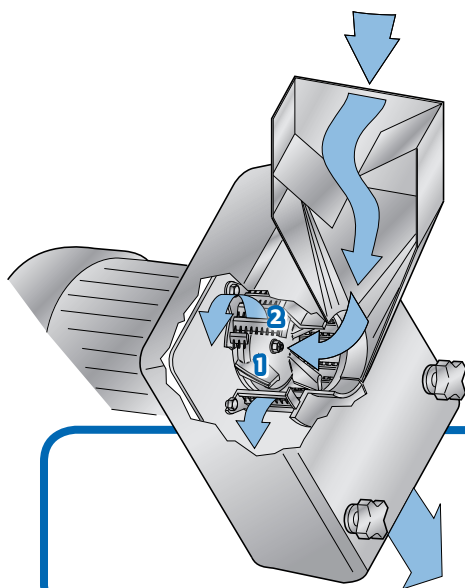


### TYPES OF CUTS



#### Cutting Head

Utilizes 6" (152.4 mm) diameter Cutting Heads paired with a variety of impellers to produce coarse to fine reductions.

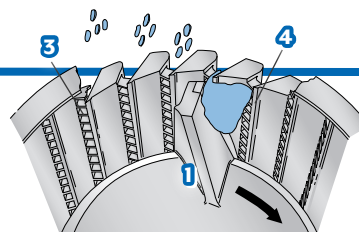


- |          |                           |           |                                     |
|----------|---------------------------|-----------|-------------------------------------|
| <b>1</b> | <b>BREAD CRUMBS</b>       | <b>6</b>  | <b>GRANOLA</b>                      |
| <b>2</b> | <b>CRACKER REWORK</b>     | <b>7</b>  | <b>PEACH PUREE</b>                  |
| <b>3</b> | <b>DESICCATED COCONUT</b> | <b>8</b>  | <b>PEANUT BUTTER CRACKER REWORK</b> |
| <b>4</b> | <b>DRIED CITRUS PEEL</b>  | <b>9</b>  | <b>SALSA</b>                        |
| <b>5</b> | <b>FISH WASTE</b>         | <b>10</b> | <b>SANDWICH COOKIE REWORK</b>       |

NOTE: Products that are explosive or create a potentially explosive atmosphere should not be processed by any standard Urschel machine. A potentially explosive atmosphere could be created if processing your product creates fumes or dust in sufficient concentrations. In such cases, customers may work with Urschel to develop a customized solution through a certified print (CP) process.

### CUTTING OVERVIEW

- |                        |                                 |
|------------------------|---------------------------------|
| <b>1.</b> Impeller     | <b>3.</b> Horizontal Separators |
| <b>2.</b> Cutting Head | <b>4.</b> Vertical Knives       |



If your product application is not mentioned on this page, contact your local Urschel representative to determine the most effective solution to your size reduction needs.

# COMITROL® PROCESSOR SLANT MODELS 3640, 3660, & 3675

## SPECIFICATIONS & DIMENSIONS

Measurements and weights may vary depending on machine configuration.

### Comitrol® Processor Model 3640 Slant:

**Length:**.....51.30" (1303 mm)

**Width:**.....40.98" (1041 mm)

**Height:**.....62.43" (1586 mm)

**Net Weight:** .....1196 lb (542 kg)

**Motor:**.....Impeller –  
40 HP (29.8 kW)

### Comitrol® Processor Model 3660 Slant:

**Length:**.....59.36" (1508 mm)

**Width:**.....42.88" (1089 mm)

**Height:**.....62.43" (1586 mm)

**Net Weight:** .....1400 lb (636 kg)

**Motor:**.....Impeller –  
60 HP (44.8 kW)

### Comitrol® Processor Model 3675 Slant:

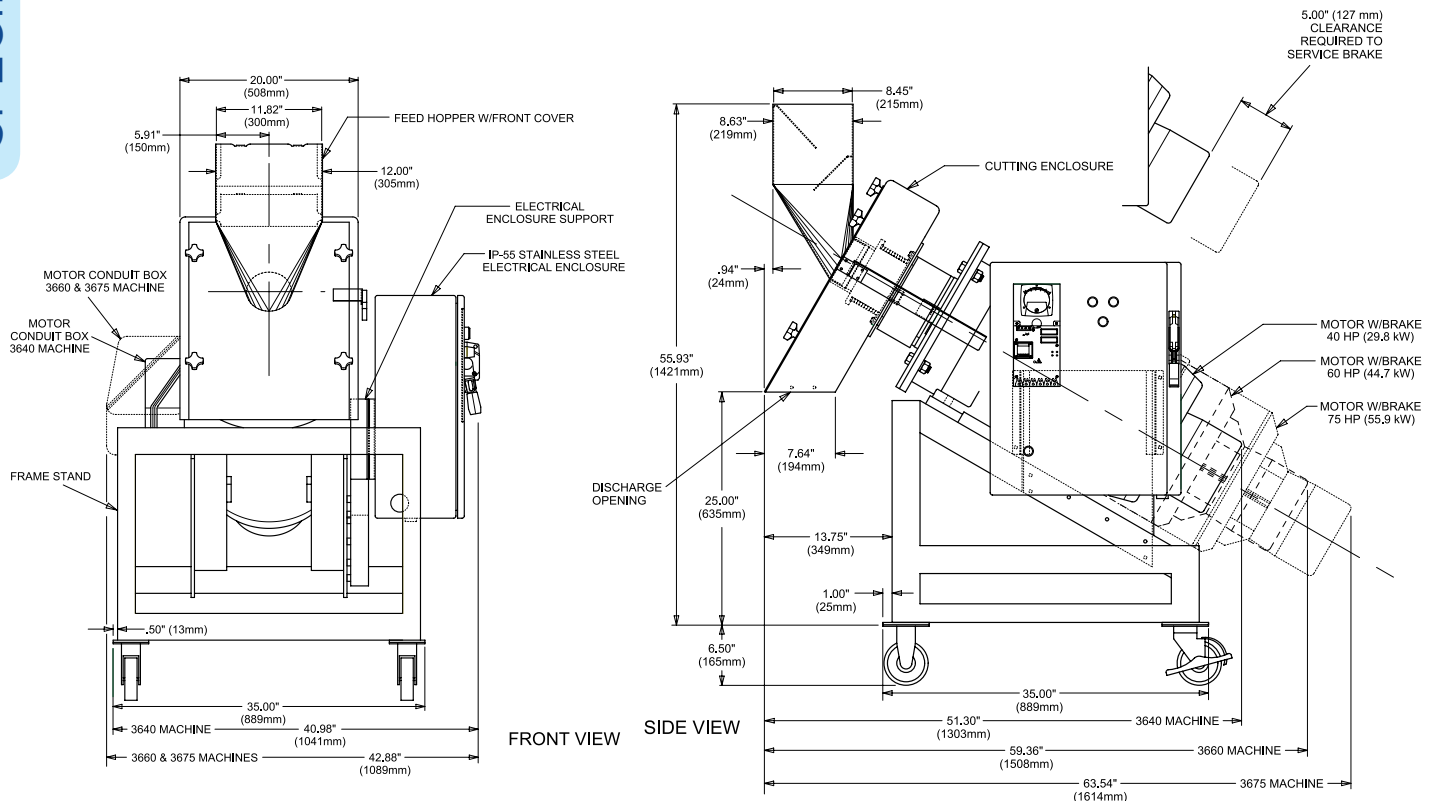
**Length:**.....63.54" (1614 mm)

**Width:**.....42.88" (1089 mm)

**Height:**.....62.43" (1586 mm)

**Net Weight:** .....1500 lb (681 kg)

**Motor:**.....Impeller –  
75 HP (56.0 kW)



**PUT URSCHEL TO THE TEST** Schedule a comprehensive, no-obligation test cut of your product.

**COMITROL®**  
BY URSCHEL THE SIZE REDUCTION SPECIALISTS



**URSCHEL®**  
The Global Leader in Food Cutting Technology  
www.urschel.com | info@urschel.com