

Comitol® Processor Model 3600F with Screw Feeder

Controlled Particle Size Reduction



SPECIFICATIONS

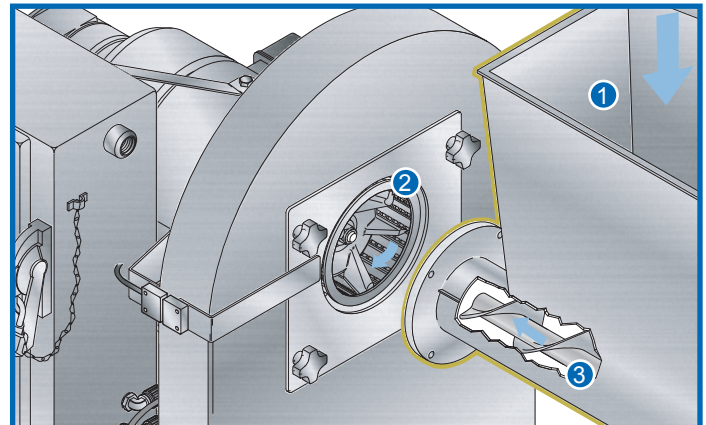
Length: 61.18" (1554 mm)
Width: 32.13" (816 mm)
Height: 69.41" (1763 mm)
Net Weight: 820 lb (372 kg)
Motors: Impeller - 10 HP (7.5 kW)
..... Screw Feeder - 2 HP (1.5 kW)

APPLICATIONS

The compact size of the Comitol Processor Model 3600F is ideal for a wide range of small volume to high capacity production environments.

Processors benefit from the wide selection of cutting heads and impellers that are available for diverse applications such as chopping, flake cutting, granulating, pureeing, and emulsifying.

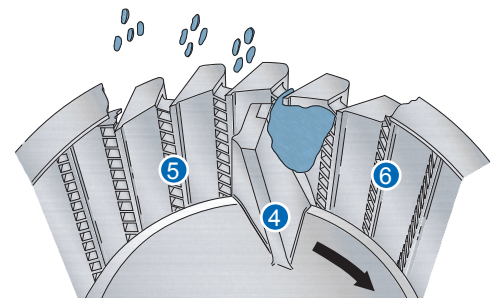
Widely used for rework of gelatin capsules, biscuits, candy, noodles, and a full spectrum of bakery goods, the 3600F also reduces meats, fish, textured vegetable protein, fruits, vegetables, spices, seaweed, cheeses, and chemical and pharmaceutical applications. The machine features continuous operation for uninterrupted production, and is designed for easy cleanup and maintenance.



COMITOL® PROCESSOR MODEL 3600F

OPERATING PRINCIPLE

Product delivered to the feed hopper [1] is transferred to the cutting head [2] and impeller by a variable speed feed screw [3]. When product reaches the impeller [4], it revolves at a high speed inside the cutting head. The resulting centrifugal force propels the product outward past the cutting edges of the stationary reduction head. The cutting head has uniformly spaced thin horizontal bars [5], or separators. Small portions of product projecting into the spaces between the separators are cut off into flakes by spaced columns of vertical knives [6]. These flakes quickly travel outward and away from the cutting head. The wall surfaces between the vertical knives are relieved to eliminate rubbing friction that would produce heat.



CUTTING HEAD ASSEMBLY

TYPES OF CUTS

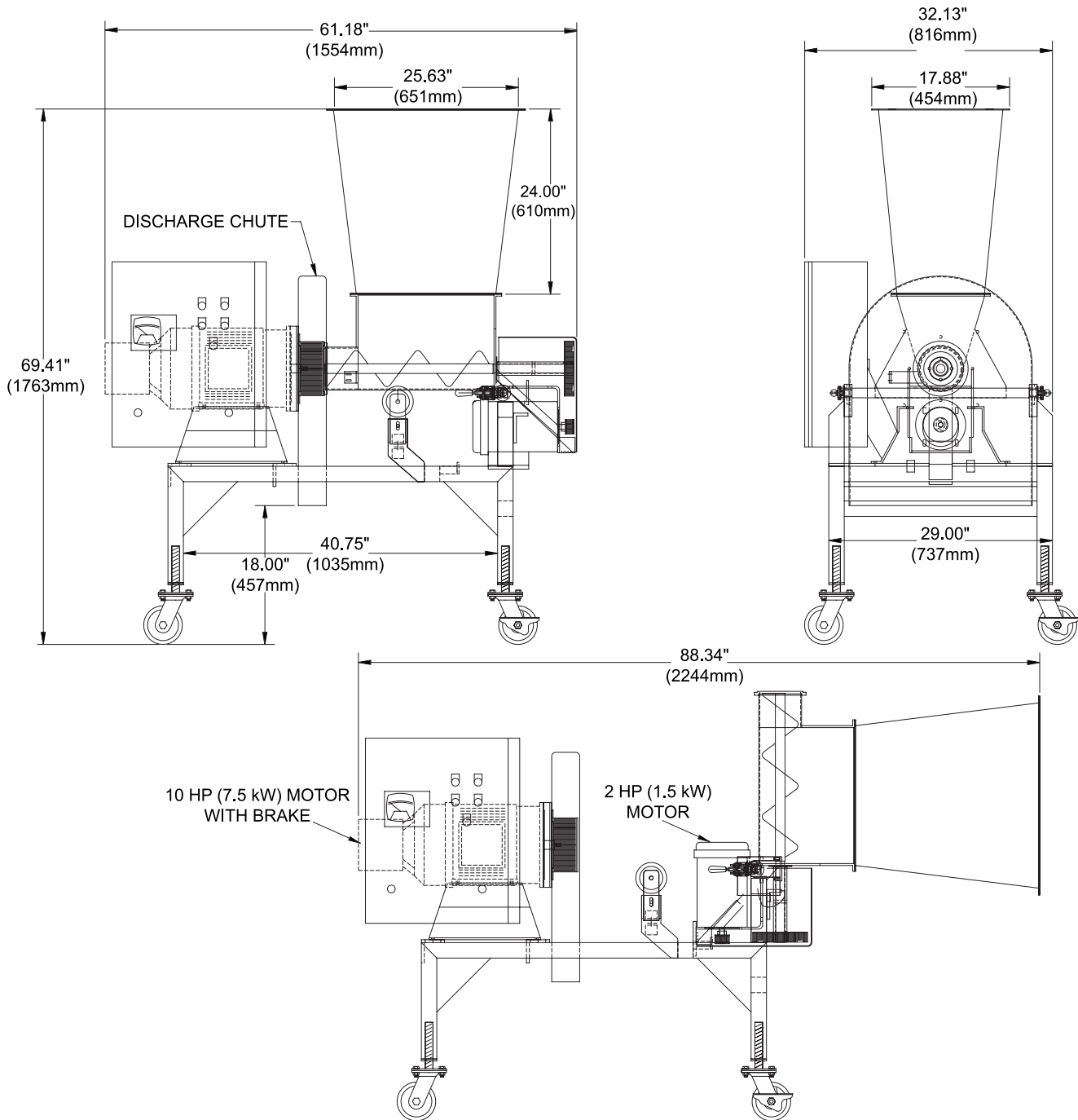
Particle sizes ranging from coarse to fine emulsions are possible. To ensure the proper combination of cutting parts, Urschel recommends your product be tested in one of our worldwide Product Test Cutting Facilities free-of-charge to find the most efficient solution to your size reduction needs.

If your product application is not mentioned on this page, contact your local Urschel representative to determine the most effective solution to your size reduction needs.

(over)

Comitol® Processor Model 3600F

Dimensional Drawing



You Are Invited to Test Cut Your Product

Urschel's complete network of test cutting facilities and experienced service and sales representatives around the world are ready to work with you on your application. Schedule a comprehensive, no-obligation test cut today at www.urschel.com.

©Comitol, The Size Reduction Specialists, Urschel, and The Global Leader in Food Cutting Technology are registered trademarks of Urschel Laboratories, Inc. U.S.A.

L2915 MAY 2016

COMITROL®
BY **URSCHEL** THE SIZE REDUCTION SPECIALISTS



URSCHEL®

The Global Leader in Food Cutting Technology

www.urschel.com | ✉ info@urschel.com