

Comitrol® Processor Model 1500

Controlled Particle Size Reduction



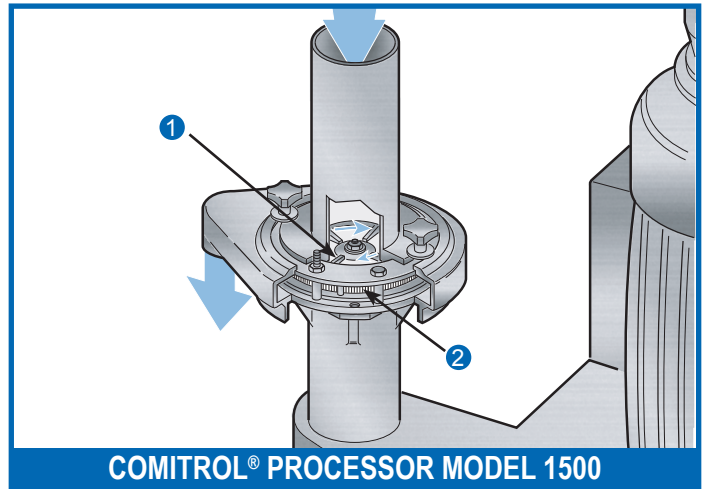
SPECIFICATIONS

Length: 51.42" (1306 mm)
Width: 33.31" (846 mm)
Height: *72.13" (1832 mm)
Net Weight: 1100 lb (499 kg)
Motor: 15, 30, or 40 HP (11.2, 22.4, or 30 kW)

APPLICATIONS

The Comitrol Processor Model 1500 is specifically designed for viscous and liquid product applications including finishing.

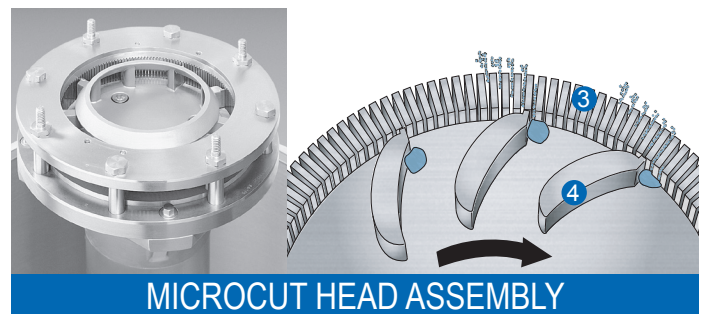
The Model 1500 is equipped with the microcut cutting head and corresponding impeller to process a variety of products including fruit nectars, soy beans, tomato catsup, barbecue sauce, vegetable purees, beverage concentrates, and creams and ointments. The machine features continuous operation for uninterrupted production, and is designed for easy cleanup and maintenance.



OPERATING PRINCIPLE

Product is guided to the center of a high speed, rotating impeller [1]. Centrifugal force moves product outward to the impeller tips, which carry the product past the cutting edges of the stationary microcut head [2].

The microcut head is a ring of closely spaced blades [3]. Product strikes the exposed cutting edges of the blades with great velocity. This action results in the removal of small particles until reduction is completed. Particles are discharged through the spaces between the blades. Because of high impeller speeds [4], product remains in the microcut head only a fraction of a second. The product is reduced in precise increments, emerging a uniform size.



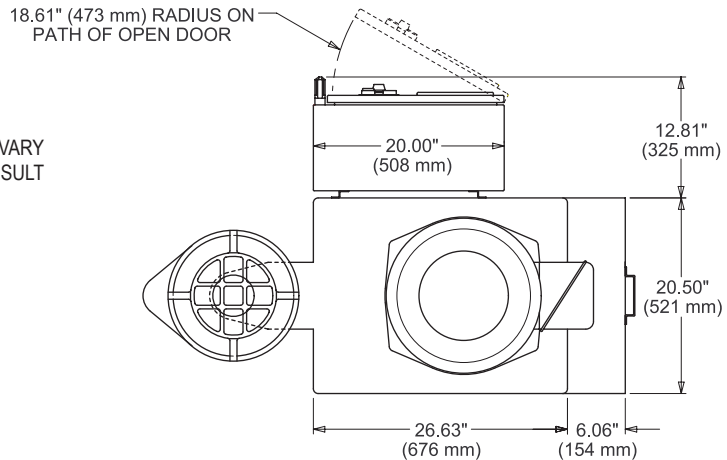
TYPES OF CUTS

Particle sizes ranging from coarse to fine emulsions are possible. To ensure the proper combination of cutting parts, Urschel Laboratories, Inc. recommends your product be tested in one of our worldwide Product Test Facilities free-of-charge to find the most efficient solution to your size reduction needs.

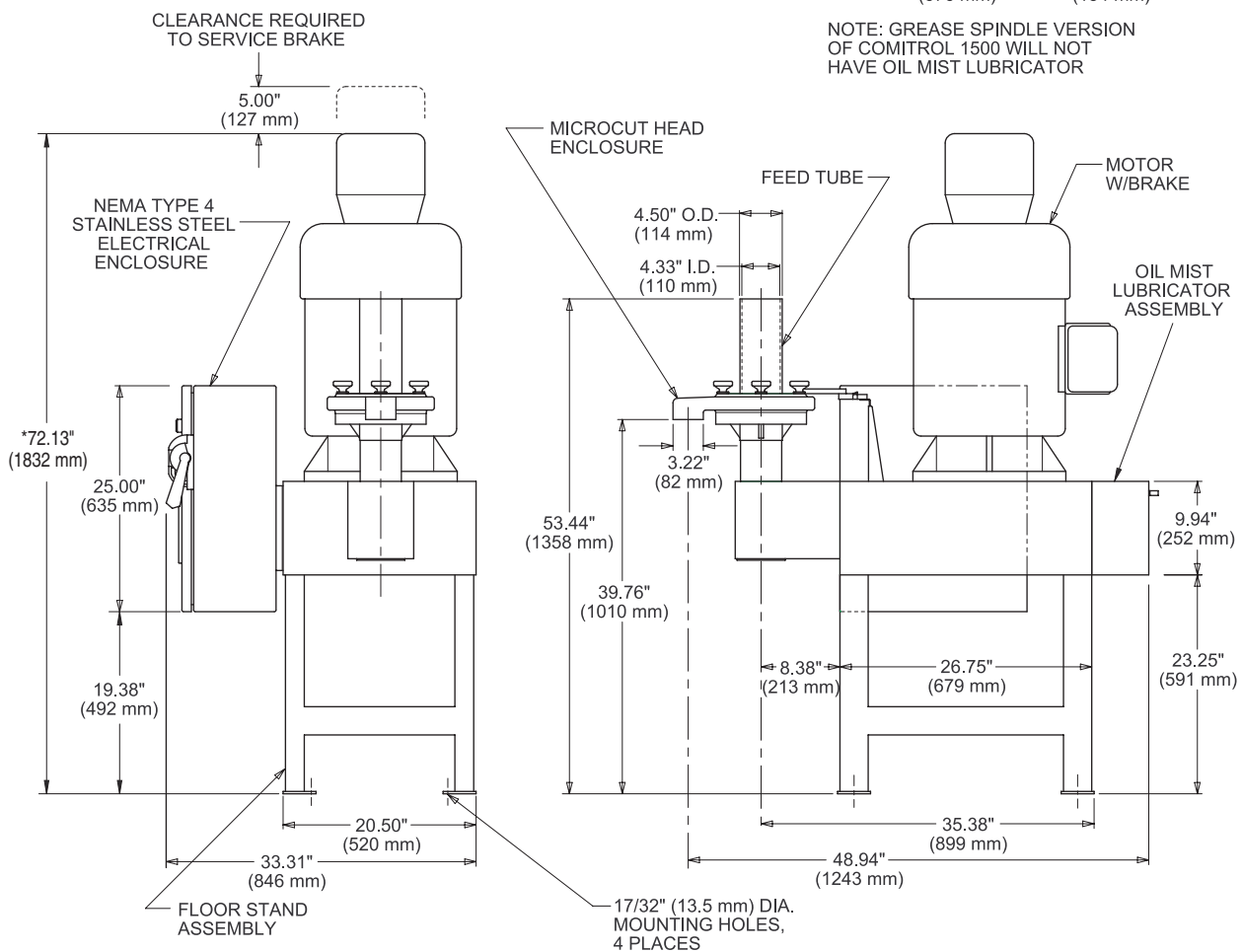
If your product application is not mentioned on this page, contact your local Urschel representative to determine the most effective solution to your size reduction needs.

Comitol® Processor Model 1500 Dimensional Drawing

*USUAL HEIGHT WITH 40 H.P. MOTOR IS SHOWN. THIS HEIGHT WILL VARY DEPENDING ON HORSEPOWER AND MOTOR MANUFACTURER. CONSULT URSCHEL LABORATORIES, INC. TO DETERMINE SPECIFIC HEIGHT.



NOTE: GREASE SPINDLE VERSION OF COMITROL 1500 WILL NOT HAVE OIL MIST LUBRICATOR



You Are Invited to Test Cut Your Product

Urschel Laboratories has a complete network of test facilities and experienced service and sales representatives around the world ready to work for you on any size reduction application. Contact your local Urschel Laboratories' representative to schedule a comprehensive, no-obligation test today at www.urschel.com.



URSCHEL®
THE SIZE REDUCTION SPECIALISTS

www.urschel.com | info@urschel.com