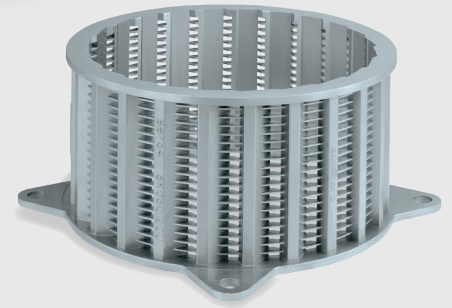


Comitrol® Versatility

CUTTING SOLUTIONS

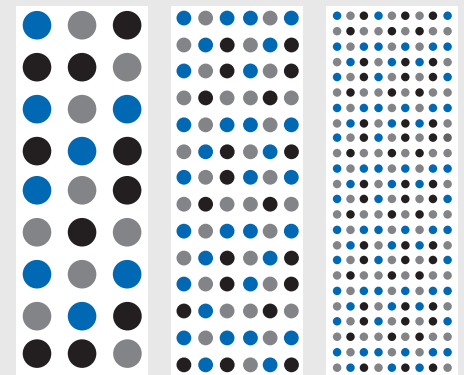
The Comitrol® Processor has been successfully used in a wide spectrum of processing applications throughout the world. Designed and manufactured by Urschel® engineering for maximum productivity and energy efficiency, this unique line of milling machines delivers an effective solution for a multitude of dry, semi-dry, and liquid size reduction applications.



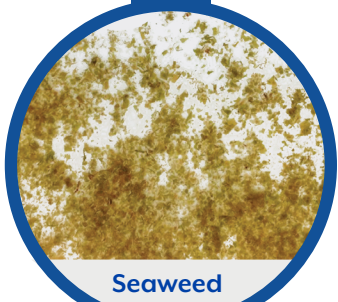
Cutting Head

The Cutting Head is comprised of uniformly spaced, vertical knife columns arranged in a circular fashion and held in place by thin horizontal separators. The leading edge of each vertical knife is a sharp knife edge. Cutting heads are constructed of special wear and abrasion resistant alloys and can usually be resharpened for extended use.

The distance between the horizontal separators and the vertical knife columns defines the opening through which the product must pass and helps determine the final particle size and shape.



Particles of uniform size can be achieved with any of the hundreds of available cutting heads.



The Comitrol Processor Model 3600F is equipped with a cutting head and a screw feeder to assist with the positive feeding of product to chop, granulate, flake, or puree. The machine works successfully alone or in tandem as a precutter with the Comitrol Processor Model 1700.



Ginger



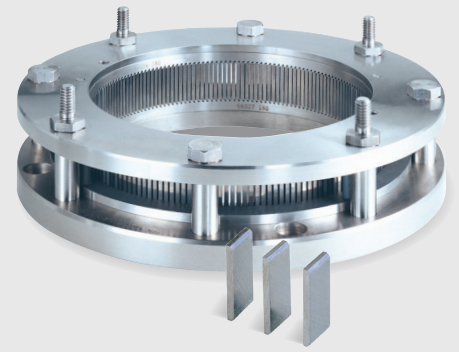
Coconut



Hummus



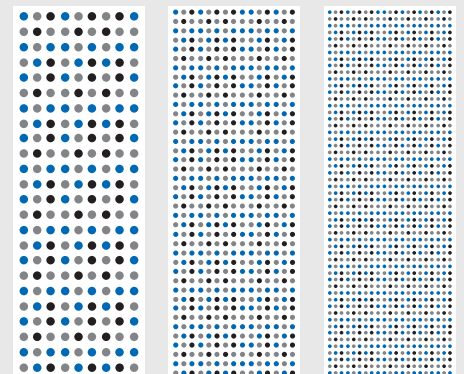
The 1700 may be equipped with a cutting head or microcut head. Microcut heads offer the smallest particle size reduction.



Microcut Head

The Microcut Head is a 6" (152.4 mm) diameter ring of closely spaced blades. When product is revolved inside this ring of blades at very high speed, centrifugal force causes pressure against the blades equal to several thousand times the weight of the product. The leading edge of each blade is a sharp shear edge for cutting accuracy, and the blades are carefully positioned to effectively reduce products down to microdimensions.

Depending on your application, a factory assisted program is available that greatly increases the use of each blade. Motor power is effectively utilized to cleanly cut the product into uniform particles instead of producing destructive heat.



Particles of uniform size can be achieved with any of the hundreds of available cutting heads.



URSCHEL®

The Global Leader in Food Cutting Technology

www.urschel.com | info@urschel.com

Contact Urschel for
more information.