

AFFINITY®

The Ultimate Robust, Heavy-Duty Dicer



URSCHEL®
The Global Leader in Food Cutting Technology



AFFINITY®



The Affinity Dicer is the largest cheese dicer Urschel manufactures.

This heavy duty dicer delivers a sanitary design, maximized output, and precision cuts. The robust machine specializes in difficult-to-cut products such as cheese, imitation cheese, soft meats, candied fruits, cold temperature applications, and products with high fat content. It is available in two different models: one model features acceptance by the U.S.D.A.; the other model features a built-in conveyor feed chute, but is not accepted by the U.S.D.A.

TYPES OF CUTS

SLICES

Slice thickness: 1/8 – 3/4" (3.2 – 19.1 mm)

DICES

A slicing knife, circular knife spindle, and crosscut knife spindle are used for dicing. Changing the dice size is done by adjusting the slice thickness, variable frequency drive, and cutting spindles as needed.

Circular Knife Cuts: 1/8 – 2" (3.2 – 50.8 mm)

Crosscut Knife Cuts: 1/8 – 2" (3.2 – 50.8 mm)

STRIP CUTS

Flat strips can be made by removing either the crosscut knife spindle or the circular knife spindle. Combinations of circular knives or crosscut knives can be used to shorten the length of the strips.

1/8 – 2" (3.2 – 50.8 mm) in length





BUILT-IN CONVEYOR FEED CHUTE VERSION

- Accepts in-feed of products up to 7" (178 mm), or up to 10" (254 mm) in largest single dimension depending on product.
- Built-in conveyor feed chute assists in feeding and orientation of product.



U.S.D.A., DAIRY DIVISION ACCEPTED VERSION

- Accepts in-feed of products up to 7" (178 mm).
- Ideal for dairy processing plants routinely inspected by the United States Department of Agriculture.

FEATURED PRODUCTS

(LEFT TO RIGHT, CLOCKWISE)

Cheddar Cheese
1/2" (12.8 mm) Dice

Processed Cheese
1" (25.4 mm) Strip

Swiss Cheese
1/8" (3.2 mm) Dice

Feta Cheese
1/2" (12.8 mm) Crumble

Cheddar Cheese
1/8 x 1/8 x 1-1/2"
(3.2 x 3.2 x 38.1 mm) Strips

Cheddar Cheese
1/8" (3.2 mm) Dice

Ham
1/8" (3.2 mm) Dice

Carrot
1/8" (3.2 mm) Dice

Bread
1/2 x 1 x 1"
(12.7 x 25.4 x 25.4 mm)

Tomato
1/4" (6.4 mm) Dice

Pot Roast
3/4 x 3 x 3/4"
(19.1 x 76.2 x 19.1 mm) Shred

Salami
1/8 x 1 x 1/8"
(3.2 x 25.4 x 3.2 mm) Strip

Pickle
3/16 x 1/8 x 5/32"
(4.7 x 3.2 x 3.9 mm)

Cranberry
1/8" (3.2 mm) Strip





AFFINITY FEATURES

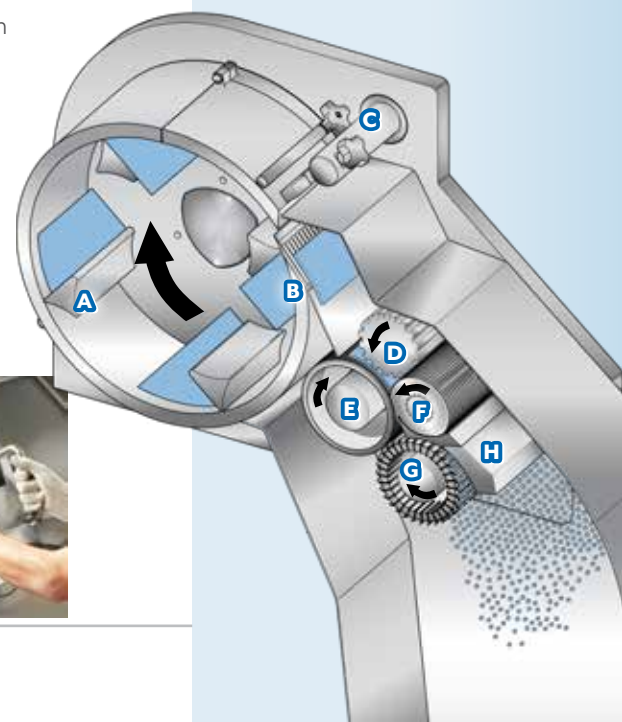
- Large infeed hopper.
- Slice adjustments are easily made by the turn of a knob (1).
- Optional outboard bearing (2) (not U.S.D.A. Dairy Division accepted) supports the cutting spindles to assist in the processing of tough, heavy-duty applications. Additional heavy-duty parts are also available.
- Uncomplicated control panel (3) simplifies operation of machine.
- Sanitary design incorporates food contact surfaces highly polished to an Ra 32 finish.
- Rounded tube frame and angled/rounded surfaces ease washdowns and deter bacterial growth.
- Discharge chute options available to accommodate different conveyor configurations (4).
- Food zone completely separate from the mechanical zone to ensure sanitation (5).
- Produces precision dices and strips at high capacity outputs.
- Feed drum (6) maintains positive feeding of sticky or moisture-rich products to promote controlled, precision cutting.
- Illuminated stainless steel guardlocks (7) permit opening of access panels after all moving parts have come to a complete stop.



- Optimal 25 HP motor (8) drives the machine and delivers maximum torque to deliver maximum throughput capacity at all times.
- VFD (variable frequency drive) controlled 5 HP crosscut motor (9) allows significant cost-savings by adjusting the motor speed to obtain a range of dice sizes instead of swapping crosscut knife spindles.
- Oil lubricator (10) automatically lubricates the drive train.
- Sealed bearing spindles (11) are lubricated for the life of the bearings.
- Designed for continuous operation for uninterrupted production.
- Hinged swingaway panels (12) ease maintenance.
- Guardlocking switch (13) designed to mate with product collection device when required.
- Simple to use tools and detailed operating manual accompany each Affinity Dicer (14).

CUTTING OVERVIEW

- A. Impeller Paddles
- B. Slicing Knife
- C. Adjustable Slice Gate
- D. Feed Roll
- E. Feed Drum
- F. Circular Knives
- G. Crosscut Knives
- H. Stripper Plate



Affinity[®] Dicer with Conveyor Feeder

DIMENSIONAL DRAWING

SPECIFICATIONS

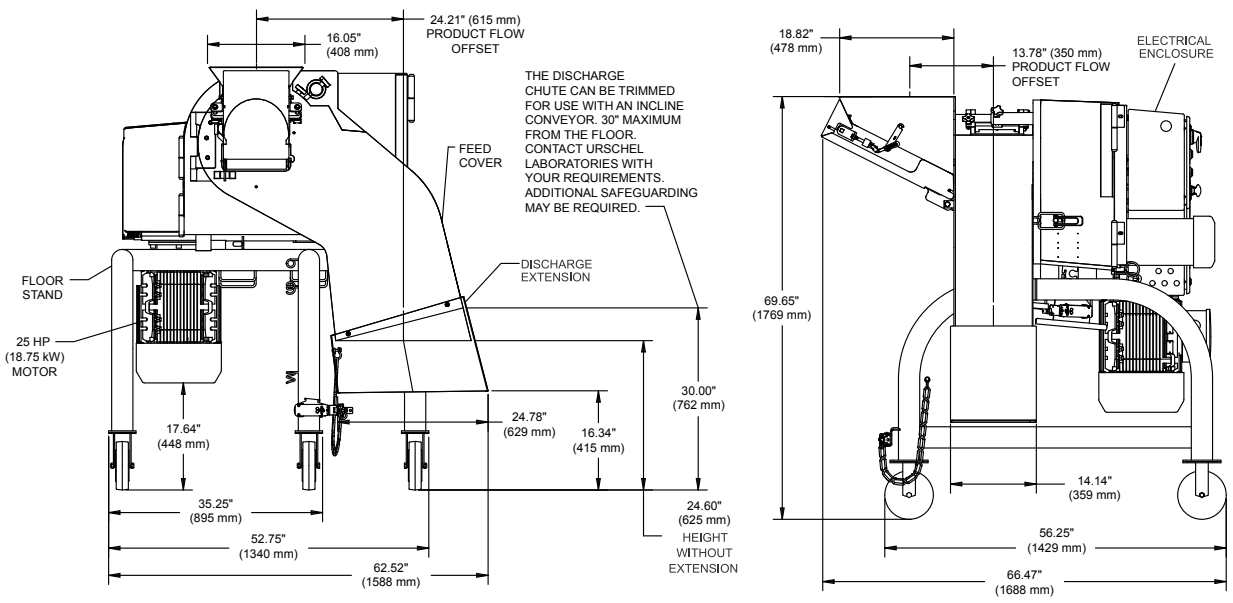
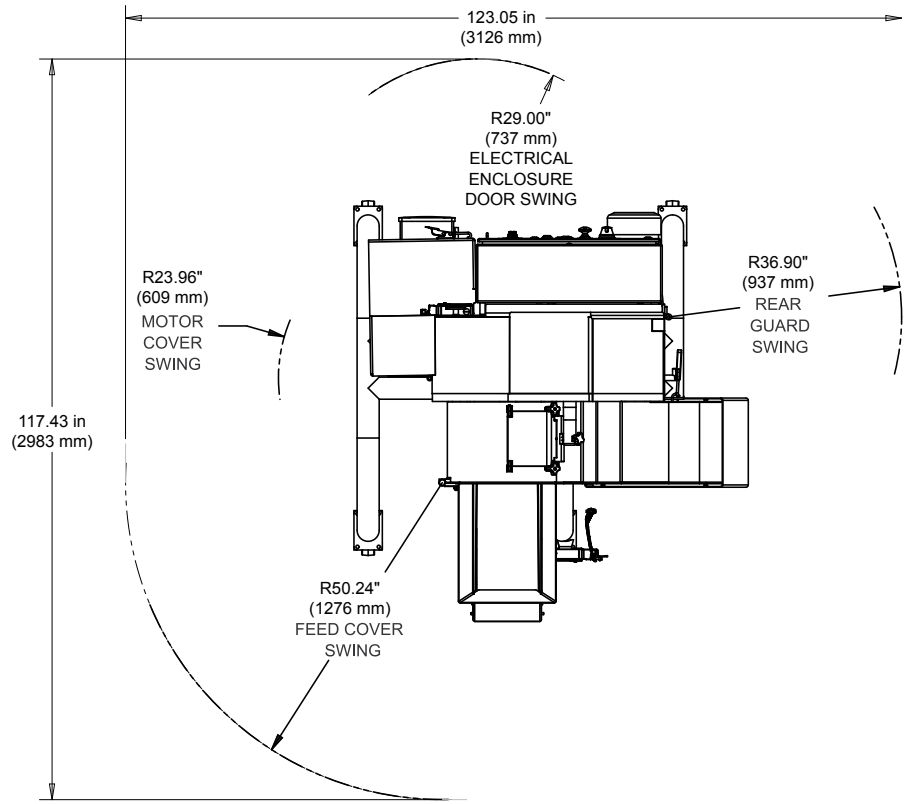
Measurements and weights may vary depending on machine configuration.

Length:..... 66.47" (1688 mm)
Width:..... 62.52" (1588 mm)
Height:..... 69.65" (1769 mm)
Net Weight: 2800 lb (1270 kg)
Motors:..... 25 HP (18.75 kW)
 5 HP (3.6 kW) – Crosscut Knife
 Spindle Assembly
 1/6 HP (.12 kW) – Infeed Conveyor



You are Invited to Test Cut Your Product

Urschel has a complete network of test facilities and experienced service and sales representatives around the world ready to work for you on any size reduction application. Contact your local Urschel representative to schedule a comprehensive, no-obligation test today at www.urschel.com.



The Complete Line of Affinity[®] Dicers Designed to Meet Your Production Goals.



Affinity[®] CD-L Dicer
2-D, 5 HP (3.7 kW) Motor



Affinity Integra[®] Dicer
3-D, 10 HP (7.5 kW) Motor



Affinity[®] Integra-D Dicer
3-D U.S.D.A., Dairy Division Accepted, 10 HP (7.5 kW) Motor



Affinity[®] Dicer
Heavy-Duty 3-D U.S.D.A., Dairy Division Accepted, 25 HP (18 kW) Motor + 5 HP (3.7 kW) Crosscut Motor + 1/6 HP (.12 kW) Infeed Conveyor Motor



Affinity[®] with Conveyor Dicer
Heavy-Duty 3-D with Built-in Conveyor, 25 HP (18 kW) Motor + 5 HP (3.7 kW) Crosscut Motor + 1/6 HP (.12 kW) Infeed Conveyor Motor

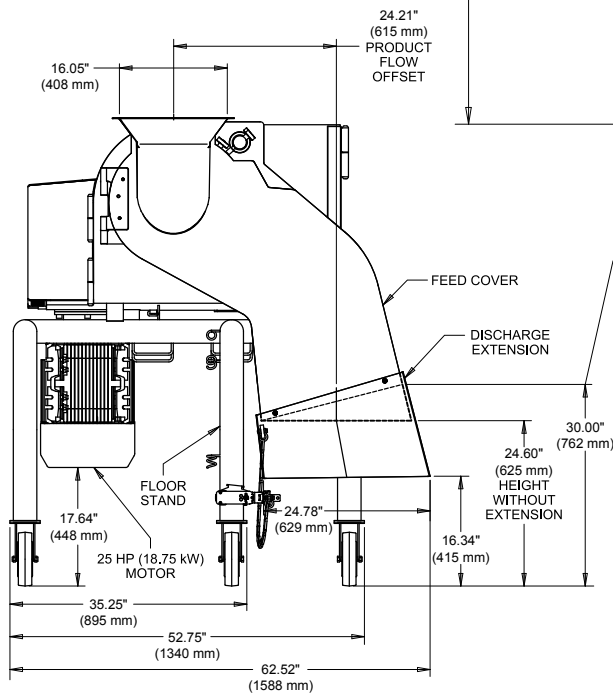
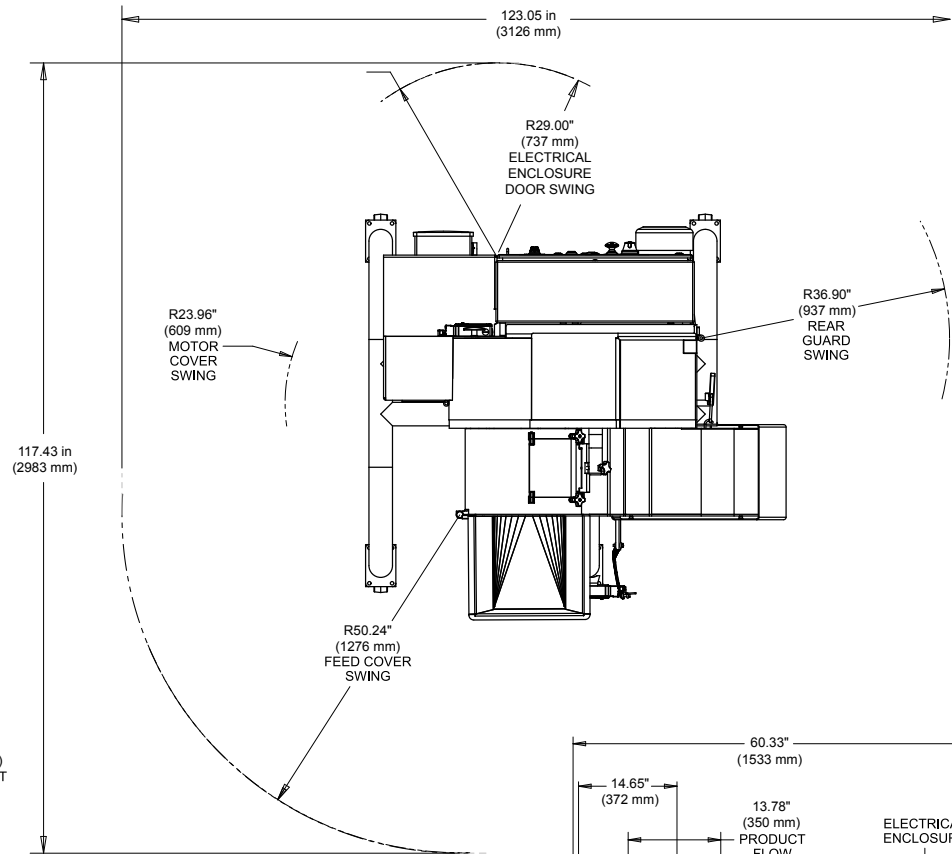
Affinity[®] Dicer U.S.D.A., Dairy Division Accepted

DIMENSIONAL DRAWING

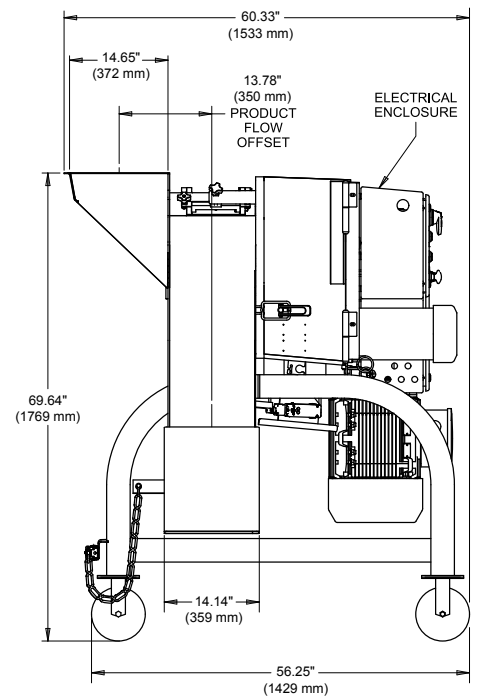
SPECIFICATIONS

Measurements and weights may vary depending on machine configuration.

- Length:**.....60.33" (1533 mm)
- Width:**.....62.52" (1588 mm)
- Height:**.....69.64" (1769 mm)
- Net Weight:**2800 lb (1270 kg)
- Motors:**.....25 HP (18 kW)
-5 HP (3.6 kW) –
Crosscut Knife
Spindle Assembly



THE DISCHARGE CHUTE CAN BE TRIMMED FOR USE WITH AN INCLINE CONVEYOR. 30" MAXIMUM FROM THE FLOOR. CONTACT URSCHEL LABORATORIES WITH YOUR REQUIREMENTS. ADDITIONAL SAFEGUARDING MAY BE REQUIRED.



URSCHEL[®]

info@urschel.com | www.urschel.com

® Affinity, Urschel, Urschel logo symbol, and The Global Leader in Food Cutting Technology are registered trademarks of Urschel Laboratories, Inc. U.S.A.

Protected patent numbers related to the Affinity Dicer include 9,296,119, 9,604,379, 9,855,669, and 10,328,596.

L3604 (s.s. L2901) JAN 2021

THE GLOBAL LEADER IN FOOD CUTTING TECHNOLOGY[®]

NORTH AMERICA | EUROPE | SOUTH AMERICA | ASIA | AUSTRALIA | AFRICA

#1 Best Selling

provider of industrial cutting machinery throughout the world.