

IMPROVED SPINDLE LIFE

EXTENDED PARTS OFFER COST-SAVINGS

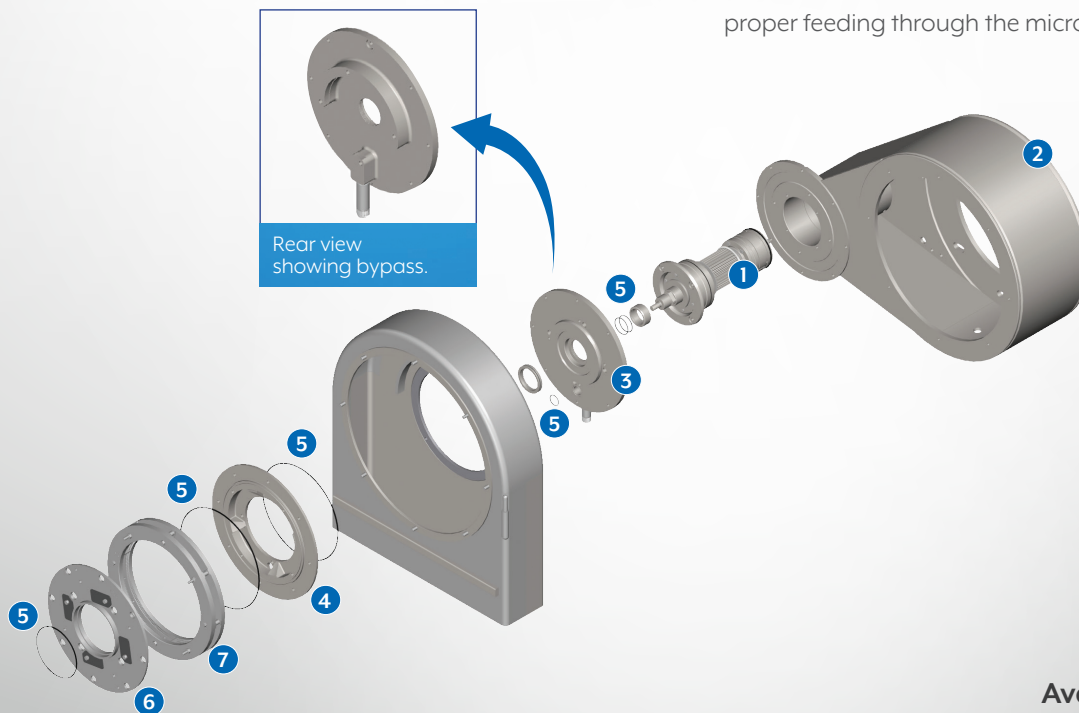


Extended Parts

Parts have been developed to support very fine particle and high pressure liquid reduction applications, such as nut milk or fruit puree processing, and CIP (cleaning in place) practices.

This set-up protects and prolongs spindle life. It is available on new or existing Comitrol® Processor 9300 pump-fed models.

An extended spindle assembly combined with an extended impeller shaft (1) mounts within the spindle support housing (2). The cutting head mount (3) is equipped with a secondary seal and bypass vent to alleviate pressure build-up due to processing or cleaning procedures. The mount also serves to monitor feedrate or capture processed product. A closed support ring (4) directs all product through the microcut blades to reduce oversized particles. Support rings and seals complete the assembly (5). The feed adapter with covers (6) helps maintain an enclosed cutting area to assist proper feeding through the microcut size reduction head (7).



Available for the pump-fed Comitrol® Processor 9300.



URSCHEL®

Contact Urschel to learn more
about this development.

www.urschel.com

THE GLOBAL LEADER IN FOOD CUTTING TECHNOLOGY®

NORTH AMERICA | EUROPE | SOUTH AMERICA | ASIA | AUSTRALIA | AFRICA

#1 Best Selling

provider of industrial cutting
machinery throughout the world.