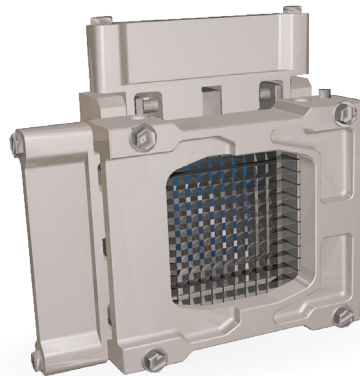


# VELOCICUT® HEAD

## CUTS SEGMENTS, SLABS, & STRIPS

The Velocicut® Head may be used in conjunction with the Urschel Model VSC Cutter, or integrated into an existing watergun system. A variety of cuts may be produced including square, rectangular, slab, bi-slab, cross slab, and segment cuts. A free-of-charge test cut of your application may assist with your purchasing decision and provide information on specific head set-up to attain your targeted specifications.

The Velocicut cutting head strip cuts carrots or potatoes. The unique blade design substantially reduces feathering on preheated or unpreheated potatoes. The blades are held together by tension and do not have a sharp knife edge. The Velocicut produces clean, accurate cuts and reduces feathered edges and downstream breakage. Use the same blade and block to produce different sizes of square, rectangular strips, or slices.



## TYPES OF CUTS

### SQUARE STRIPS

.156" (4.0 mm)	.297" (7.5 mm)	.472" (12 mm)
.188" (4.8 mm)	.305" (7.7 mm)	.500" (12.7 mm)
.218" (5.5 mm)	.313" (8.0 mm)	.512" (13 mm)
.250" (6.4 mm)	.330" (8.4 mm)	.560" (14.2 mm)
.276" (7.0 mm)	.344" (8.7 mm)	.591" (15 mm)
.281" (7.1 mm)	.375" (9.5 mm)	.750" (19.1 mm)
.285" (7.2 mm)	.394" (10.0 mm)	.875" (22.2 mm)
.290" (7.4 mm)	.406" (10.3 mm)	1.0" (25.4 mm)
.294" (7.5 mm)	.438" (11.1 mm)	

### RECTANGULAR STRIPS

Any combination of square strip sizes is available to produce cuts such as .290 x .313" (7.4 x 8.0 mm).

### SLAB CUTS

A wide range of slab cut sizes is available to meet your product requirements.



### POTATO

.290" (7.4 mm)  
Strip

## TEST CUT YOUR PRODUCT

Contact your local Urschel representative to schedule a comprehensive, no-obligation test-cut of your product: [www.urschel.com](http://www.urschel.com).



# URSCHEL®

The Global Leader in Food Cutting Technology

[www.urschel.com](http://www.urschel.com) | ✉ [info@urschel.com](mailto:info@urschel.com)

*If your product application is not mentioned on this page, contact your local Urschel representative to determine the most effective solution to your size reduction needs.*