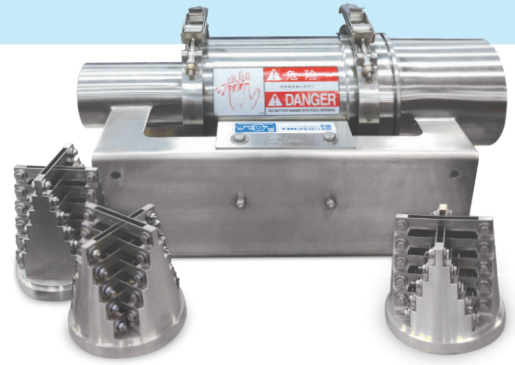


FLO-CUT® MODEL 360 HEAD

CLEAN, ACCURATE WATERGUN CUTTING

The Flo-Cut® Model 360 cutting head is designed for use in large volume watergun systems, or with the Urschel Model VSC Cutter. This unit can be integrated into watergun systems and offers fast, easy cutting head replacement for changing knives or sizes of cuts. A variety of cuts may be produced including square, rectangular, slab, bi-slab, cross slab, or segment cuts. Infeed diameter measures 3.375" (86 mm) and a discharge diameter measures 5.820" (148 mm). The Model 360 is designed for easy cleanup and maintenance.



Measurements and weights may vary depending on machine configuration.

Length:..... 21.75" (552 mm)

Width:..... 14.50" (368 mm)

Height: 11.00" (279 mm)

Net Weight: 92 lb (42 kg)

TYPES OF CUTS

SQUARE STRIPS

- .250" (6.4 mm)
- .281" (7.1 mm)
- .290" (7.4 mm)
- .300" (7.6 mm)
- .313" (8.0 mm)
- .344" (8.7 mm)
- .375" (9.5 mm)
- .406" (10.3 mm)
- .438" (11.1 mm)
- .469" (11.9 mm)
- .500" (12.7 mm)
- .563" (14.3 mm)
- .625" (15.9 mm)
- .750" (19.1 mm)

RECTANGULAR STRIPS

- .281 x .406"
(7.1 x 10.3 mm)
- .281 x .594"
(7.1 x 15.1 mm)
- .290 x .313"
(7.4 x 8.0 mm)
- .313 x .375"
(8.0 x 9.5 mm)
- .313 x .750"
(8.0 x 19.1 mm)
- .315 x .385"
(8.0 x 9.8 mm)
- .330 x .395"
(8.4 x 10 mm)
- .344 x .469"
(8.7 x 11.9 mm)

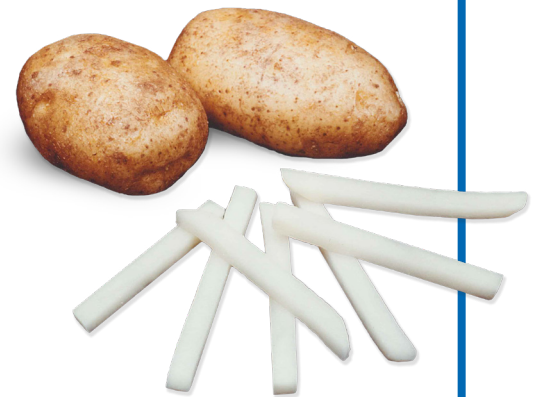
- .375 x .750"
(9.5 x 19.1 mm)
- .438 x .750"
(11.1 x 19.1 mm)
- .438 x .875"
(11.1 x 22.2 mm)

SEGMENT CUTS

4, 8, or 12

SLABS

A wide range of slab cut sizes is available to meet your product requirements.



POTATO
.290 inch (7.4 mm) Strip

TEST CUT YOUR PRODUCT

Contact your local Urschel representative to schedule a comprehensive, no-obligation test-cut of your product: www.urschel.com.



URSCHEL®

The Global Leader in Food Cutting Technology

www.urschel.com | ✉ info@urschel.com

If your product application is not mentioned on this page, contact your local Urschel representative to determine the most effective solution to your size reduction needs.