

MODEL HS-A

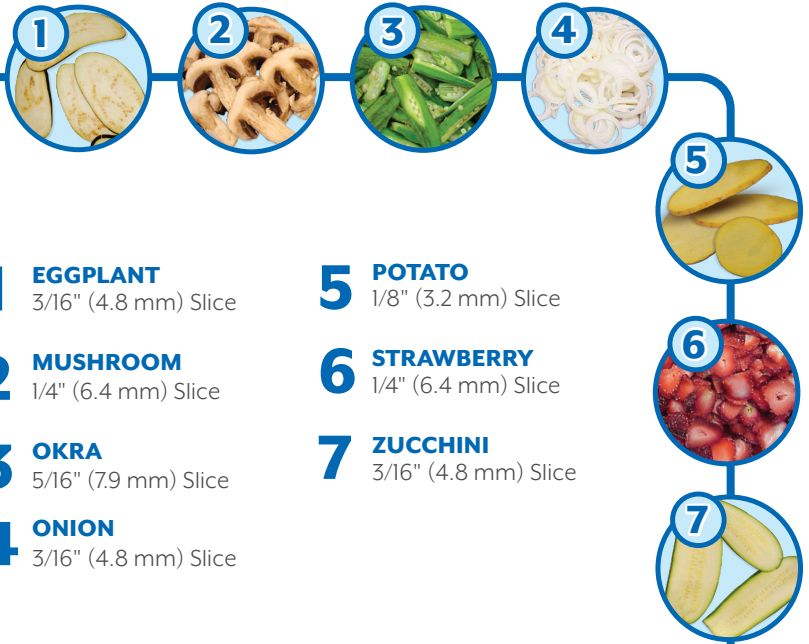
HIGH SPEED CENTRIFUGAL SLICER

The Urschel Model HS-A is a simple, rugged, high speed centrifugal slicers capable of making excellent slices on a wide variety of products including potatoes, cabbage (quarter prior to slicing), peaches, tomatoes, carrots, celery, and apples. Products up to 5-1/2" (140 mm) in diameter can be sliced. The slice thickness is easily adjustable to a maximum of 3/4" (19.1 mm). At reduced capacities, the slicer will make slices the full length of oblong products such as potatoes, carrots, and pickles, but the product to be sliced must not be longer than 5" (127 mm). The Model HS-A features stainless steel product contact parts, continuous operation for uninterrupted production, and simplified design for easy cleanup and maintenance. This machine is available through the Urschel CP (Certified Print) process. Contact your Urschel representative to learn more.



TYPES OF CUTS

FLAT SLICES: Adjustable up to a maximum of 3/4" (19 mm) slice thickness.



1 EGGPLANT
3/16" (4.8 mm) Slice

2 MUSHROOM
1/4" (6.4 mm) Slice

3 OKRA
5/16" (7.9 mm) Slice

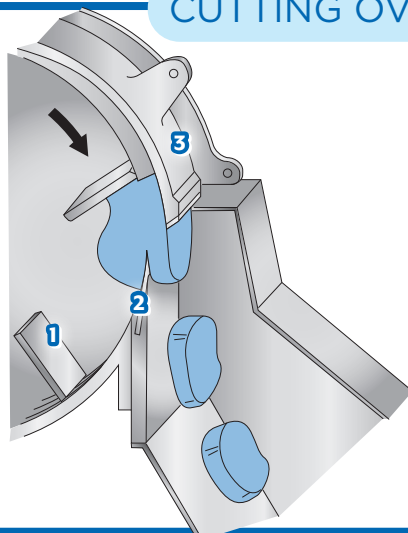
4 ONION
3/16" (4.8 mm) Slice

5 POTATO
1/8" (3.2 mm) Slice

6 STRAWBERRY
1/4" (6.4 mm) Slice

7 ZUCCHINI
3/16" (4.8 mm) Slice

CUTTING OVERVIEW



- 1. Impeller
- 2. Slicing Knife
- 3. Case Gate

If your product application is not mentioned on this page, contact your local Urschel representative to determine the most effective solution to your size reduction needs.

MODEL HS-A

Measurements and weights may vary depending on machine configuration.

Length:..... 70.60" (1793 mm)

Net Weight: 498 lb (226 kg)

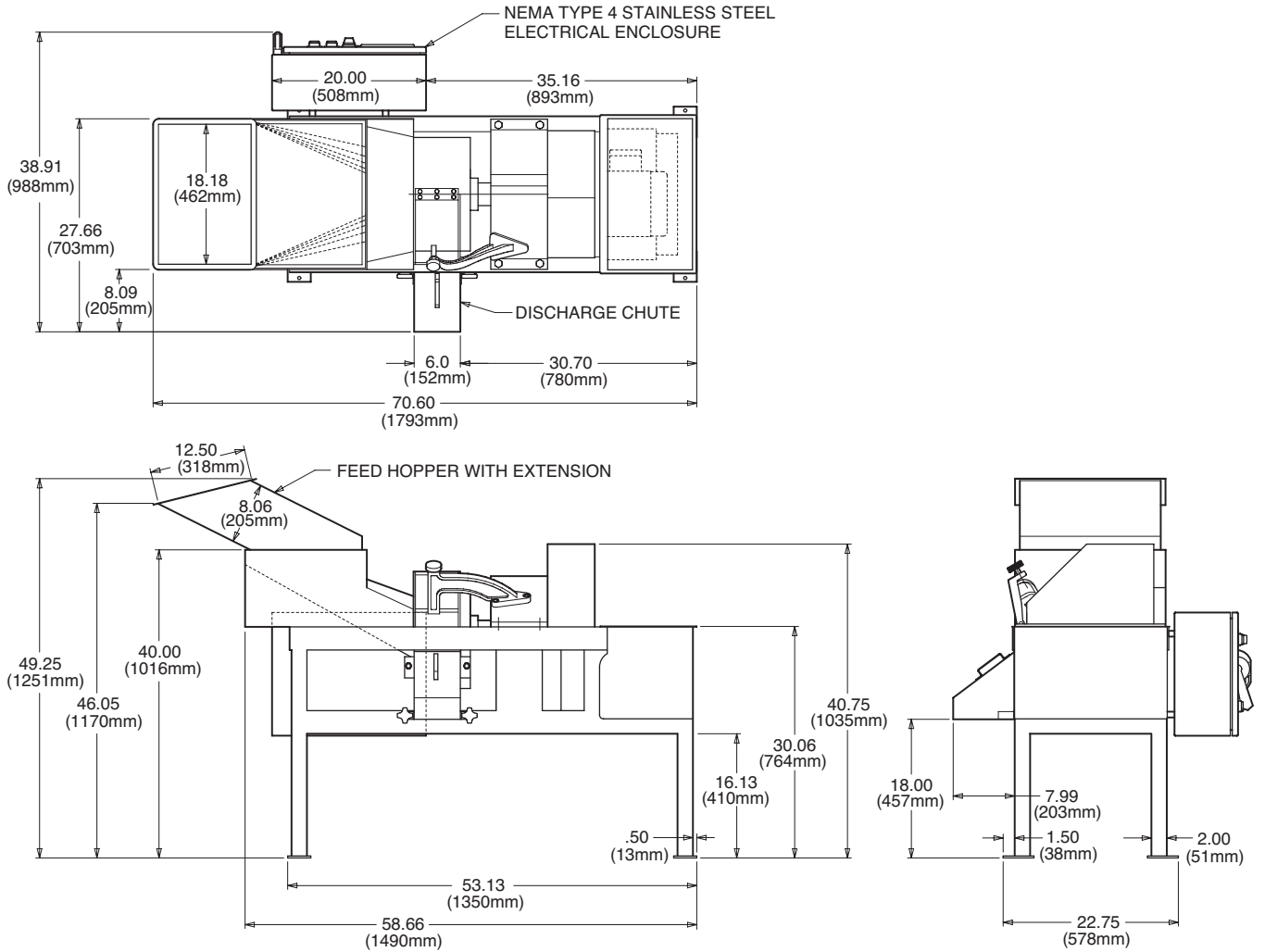
Width:..... 38.91" (988 mm)

Motor:..... 2 HP (1.5 kW)

Height:..... 49.25" (1251 mm)



SPECIFICATIONS & DIMENSIONS



TEST CUT YOUR PRODUCT

Contact your local Urschel representative to schedule a comprehensive, no-obligation test-cut of your product: www.urschel.com.



URSCHEL®

The Global Leader in Food Cutting Technology

www.urschel.com | ✉ info@urschel.com