

Disinfection, Washing

# GEWA 3850T PLUS washing machine for raisins

Specially designed for effective pre-cleaning, washing and disinfection of dried fruit and comparable high-density products – with increased washing efficiency and extra-effective product outfeed.

**800 kg (1,760 lb)/h** Max. capacity



## Your benefits

- ✔ Increased removal of fine particles and foreign bodies, among other things due to pre-vibration
- ✔ Increased washing efficiency and complete product outfeed due to additional nozzles in the wash tank
- ✔ Reduced water consumption with perfect washing results due to the HELICAL washing system
- ✔ Continuous washing process – with automatic filling, no operating personnel required
- ✔ Washing, disinfection and rinsing possible in one machine
- ✔ Can be used as a universal HELICAL washing machine for a wide range of applications

## Product groups

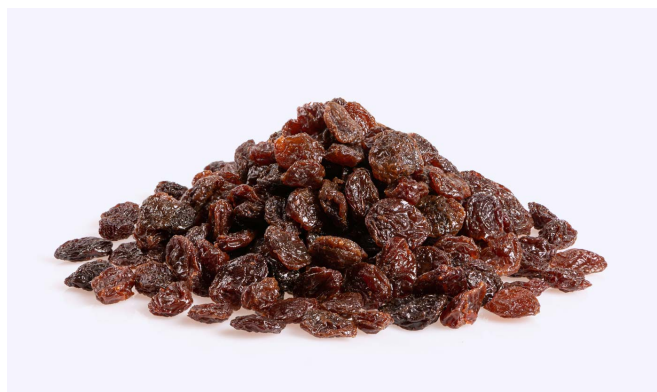


## Portrait

### **Specially designed for the effective and economical washing of products with a high sand content**

The GEWA 3850T PLUS specializes in pre-cleaning, washing, disinfecting, treating and rinsing dried fruit such as raisins. Furthermore, due to the improved fine particle separation and washing efficiency, as well as the effective product outfeed, the machine is also suitable for other small high-density products requiring the removal of dust or other small particles.

The product is automatically brought to the pre-vibration station via an infeed belt or manually.



Dust, sand and other fine particles fall through the holes of the vibration unit, while the pre-cleaned product is transported into the wash tank. Due to the HELICAL washing system, even sinking products such as raisins are conveyed through the wash tank in a spiral movement. With the insect and fine particles removal system, the lateral fine particle removal drum and two sand trap funnels, which are included as standard on the GEWA 3850T PLUS, dirt and fine particles can be perfectly separated out. Additional nozzles in the wash tank ensure that no product remains in the wash tank.

At the end of the wash tank, the product and the water are transported to a vibration outfeed by means of an overflow and sprayed with a fresh water shower. The water flows through a strainer into the pump tank, from which it is pumped back into the wash tank and used again. The flow rate and movement of the water in the wash tank can be adjusted to suit different products.

The washing machine can also be used as a universal **GEWA PLUS** for the continuous pre-washing, washing, disinfection and treatment of products such as lettuce, vegetables, herbs and fruit, both cut and whole.

## Benefits



### Preliminary vibration for products with a high sand content

With the preliminary vibration, dust and other small particles can be removed prior to the actual washing process. No water is used during vibration in the processing of dried fruit. The filter strainers are available with different hole sizes and can be removed and changed within seconds using a fast-acting tensioning system.



### Insect and fine particle removal system

A rotary insect removal system with drum is integrated into the GEWA 3850T PLUS as standard. The insect drum can be easily swiveled out of the wash tank, for example for cleaning. It also has an open design for easy access. At the same time, operational safety is guaranteed. (Fig. GEWA 3800)



### Lateral fine particle removal drum

The lateral fine particle removal drum with a slotted strainer opening of 0.5 mm filters particles out of the circulating wash water. It enables continuous operation without blocking the filter above the pump tank and protects the pumps. This is particularly important for products that foam and contain many small particles. (Fig. GEWA AF)



### Sand trap sedimentation unit

The sand trap integrated into the wash tank separates the loosened heavy dirt (e.g. small stones) and sand from the product flow. Dirt and sand settle in the sand trap at the bottom of the wash tank and are not discharged from the wash tank with the product. (Fig. GEWA 3800 PLUS)



### Extra-efficient washing process and product outfeed

Raisins normally have a high sand content and must therefore be thoroughly cleaned. In addition, small products with a high density are more difficult to discharge from the washing machine. This GEWA version is therefore equipped with additional nozzles in the wash tank. They increase washing efficiency and ensure that no product remains in the wash tank.



### Ideal accessibility for cleaning and maintenance

All areas are easily accessible for easy cleaning and maintenance. All pipes, the pump casing, the wash and pump tanks and the covers and switch cabinet are made from AISI 304 stainless steel. All in all, the washing machines impress users with their optimal hygienic design. In the PLUS models with vibration outfeed, there are no screws whatsoever in the product area. (Fig. HEWA 4000)

## Technical data

<b>Electrical power</b>	Power	7.1 kW (9.5 HP)
	Voltage	3~400 V N/PE
	Frequency	50 Hz
<b>Water</b>	Fresh water connection	3/4 inch (GEKA coupling)
	Water drainage	2 x 2"
	Total volumes	940 l
<b>Dimensions</b>	LxWxH	5762 x 1389 x 1816 mm (226.9 x 54.7 x 71.5")
	Weight	587 kg (1295 lb)
	Infeed/placement height	1,443 mm (56.8")
	Outfeed/delivery height	925 mm (36.4")

The data indicated are standard information. In addition, adaptation to other supply networks (e.g. 230V/60 Hz) is optionally possible (except for manual and pneumatic machines). Subject to changes.