

Preparing, Cutting

TT450 top and tail machine

Ideal for use in automated lettuce processing with a low personnel requirement – the top and tail machine is designed for automatically cutting the stalk and leaf tips of frisée, endive and romaine lettuce

up to 3.600 kg (7,930 lb)/h Max. capacity



Your benefits

- ✓ Perfect and consistent cutting quality at high processing speeds
- ✓ High yield with minimal waste thanks to optimized cutting technology
- ✓ Low personnel requirement: only 2 people are needed to operate the machine
- ✓ Easy operation and cleaning thanks to good accessibility

Portrait

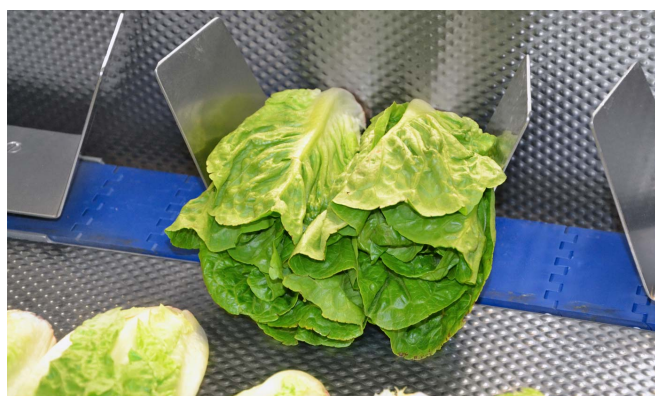
Precise and consistent cutting quality with versatile processing options

The TT450 is designed for professional use in the preparation area of automated lettuce processing. The TT450 is a top and tail machine for automatically trimming the stalk and leaf tips of frisée, endive and romaine lettuce or all green lettuces with flat stalks. The TT450 allows a considerable increase in productivity by up to 110 % per person compared to manual processing, as well as an improved yield of up to 6 % more at the same time.

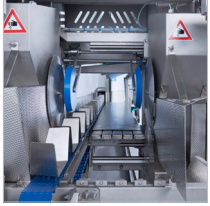
The TT450 is equipped with an automatic waste sorting system, which can optionally be supplemented with additional discharge and waste belts.

The robust industrial design and the open construction with a removable cover and easily opened hinged doors enable quick and easy cleaning and thus optimal hygiene.

Product groups



Benefits



High productivity – minimal waste

The TT450 enables a considerable increase in productivity by up to 110 % per person compared to manual processing, as well as achieving an improved yield of up to 6 % at the same time. The TT450 impresses users with its high processing capacity of up to 30 heads of lettuce per minute and per person.



Optimal maintenance and cleaning

The robust stainless steel construction makes the TT450 ideal for long, low-maintenance use. The entire system, including the conveyor belt, is easily accessible for service work and cleaning. All covers are easy to open and a safety check is carried out: the machine stops when the covers are open.



Simple operation and easily adjustable knives

The TT450 is easy and safe to operate with only two people and without interrupting operation. The positioning of the top/tail blades based for different products or product characteristics to optimize the yield can be carried out quickly and effortlessly.

Technical data

Electrical power	Power	1.6 kW (2.1 HP)
	Voltage	3–400 V N/PE
	Frequency	50 Hz
Dimensions	LxWxH	4500 x 1305 x 1800 mm (177.2 x 51.4 x 70.9")
	Weight	810 kg (1785 lb)
	Infeed/placement height	965 mm (38")
	Outfeed/delivery height	415 mm (16.3")
Miscellaneous	Diameter of raw product	max. 380 mm (15")
	Length of raw product	max. 450 mm (17.7")
	Cutting thickness	10–60 mm (3/8–2.4")

The data indicated are standard information. In addition, adaptation to other supply networks (e.g. 230V/60 Hz) is optionally possible (except for manual and pneumatic machines). Subject to changes.